

ANNUAL REPORT 2008 - 09

Every child deserves a home.



www.CHSVA.org

*"But I have promises to keep, and miles to go
before I sleep, and miles to go before I sleep."*
—Robert Frost



Anne S. Warlick
Board Chair

A Message from the Board Chair and President Going on 110 Years and Going Strong!

From the newborn baby who was left abandoned on a hard, cold floor to the teenaged siblings who were tragically orphaned, Children's Home Society (CHS) has been there throughout the year providing critical, compassionate services to link children in need to permanent, loving families.

Since 1900, CHS has been finding permanent, loving homes for Virginia's children. Since that time, we have placed more than 12,500 children with a forever family through the efforts of the agency's dedicated staff, a committed Board of Directors and generous contributors like you. Without your generous support, our agency would not have been able to transform the lives of so many children and youth across the Commonwealth.

Our children are the most vulnerable segment in today's society—and our most valuable resource for the future. Therefore, we thank you for your support of CHS adoption, counseling and temporary foster care programs which will help the children of today become the loving parents and productive citizens of tomorrow.

This Annual Report is a celebration of the commitment of the donors, agency volunteers and staff whose support has helped us continue to carry out our mission of finding a permanent home for every child. As we approach our 110th year of service, we thank you in advance for your continued support of our mission of service to Virginia's children and families.

Sincerely,

Anne S. Warlick
CHS Board Chair and
adoptive parent

Nadine Marsh-Carter
CHS President/CEO and
adoptive parent



Nadine Marsh-Carter
President/CEO

Officers:

Anne S. Warlick
Chair
Jennifer L. Hanrahan
Chair-Elect
Gail O. Waechter
Secretary
William W. Flexon
Treasurer

Board of Directors

Anne S. Warlick, Chair <i>Fredericksburg</i>	Janet C. Erkert <i>Fredericksburg</i>	Brenda Kerr <i>Richmond</i>	Lisa M. Richardson <i>Richmond</i>
John V. Antonietta <i>Richmond</i>	James E. Farnham <i>Richmond</i>	Susan R. Knaysi <i>Richmond</i>	Louise W. Robertson <i>Bedford</i>
D. Neil Ashworth <i>Richmond</i>	William W. Flexon <i>Richmond</i>	Edward B. Lumpkin <i>Richmond</i>	Carole D. Rush <i>Richmond</i>
Robert K. Bailey III <i>Fredericksburg</i>	Sarah J. Hallock <i>Richmond</i>	Kimberly M. Magee <i>Richmond</i>	Patrick J. Sanderson <i>Richmond</i>
Sandra D. Bowen <i>Richmond</i>	Jennifer L. Hanrahan <i>Richmond</i>	Phillip S. Marsteller <i>Richmond</i>	Micki L. Stout <i>Richmond</i>
Tinina Q. Cade <i>Richmond</i>	Pamela M. Hill <i>Richmond</i>	David H. Martin <i>Richmond</i>	Elaine G. Thompson <i>Altavista</i>
I. Bruce Cauthen, Jr. <i>Richmond</i>	M. Kelley Johnston <i>Richmond</i>	Roy Mentkow <i>Roanoke</i>	Ephfrom R. Walker III <i>Richmond</i>
Bettie P. Douglas <i>Altavista</i>	Ruth G. Jones <i>Richmond</i>	Mark H. Miller <i>Richmond</i>	Gail O. Waechter <i>Richmond</i>
Lawrence J. Elinskas <i>Richmond</i>	Barbara L. Jowaisis <i>Richmond</i>	Harold E. Moore <i>Richmond</i>	Frieda Willhide <i>Dogue</i>
			Dorothy C. Young <i>Richmond</i>

Volunteers Making a Difference

Awards

CHS recognized the descendants of the **John Langbourne Williams** family with the 2008 Human Spirit Award. The award is given annually to a person, association or organization that has embraced and advanced the CHS mission.

CHS honored **Sally Irizarry Hirsch** with the 2009 Open the Door Award in recognition of creatively promoting the agency's mission and opening the door to new donors.



Left to Right: Julien Williams, Kemper Thorton, Otto Williams, Courtenay Cann, Jack Williams

Company Spotlight–UPS Freight

Volunteers from UPS Freight in Richmond made a big delivery to CHS last winter when they stocked the baby closet with much needed items.

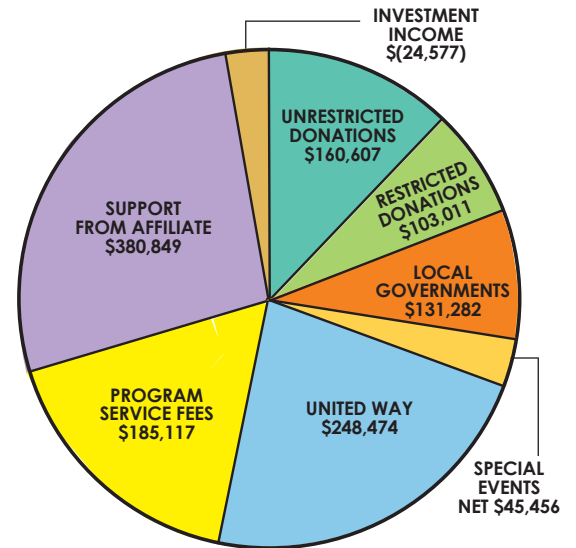
The volunteers returned in June to spruce up the grounds at the CHS home office in Richmond. A huge thank you to UPS Freight.



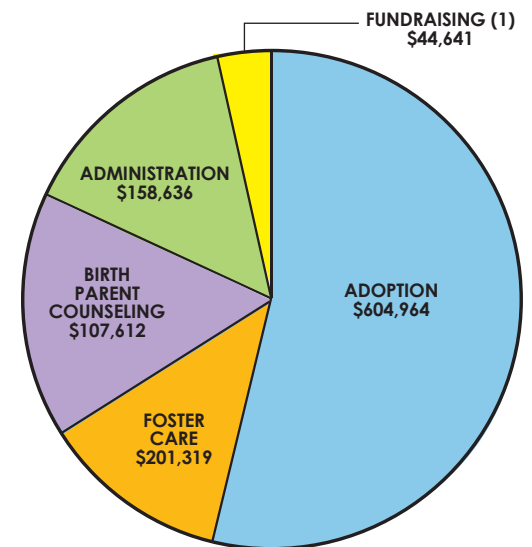
Financials

Fiscal Year 2008–2009

July 1, 2008-June 30, 2009



ACTUAL REVENUES \$1,230,219



ACTUAL EXPENSES \$1,117,172

(1) Fundraising expense is presented net of CHS Memorial Fund reimbursement of \$182,842.

A snapshot of our clients

I am an 8-year-old boy who was so severely neglected by my mother that the local social services agency removed me and my little sister from my family two years ago. I have been transferred to three different foster families during that two-year period, mainly because I act out a lot and have not done well in school. I know that everyone wants to adopt my sister because she is cute. I am very angry and trust no one. Can you help me?

The CHS **Partnership for Adoption programs** was created to facilitate the adoptions of children and teens out of Virginia's foster care system and into safe, permanent families.

After trying unsuccessfully to conceive, Mary explains: "As we began exploring adoption, Jim and I envisioned welcoming a baby into our home. But we soon discovered that adopting older siblings was right for us."

The CHS social worker introduced them to 5- and 8-year old Sheila and Kevin, and the rest, according to Mary, is history. Mary says at first she thought she'd mourn not witnessing the "firsts" - first smile, first step, first word - but soon realized she and Jim had their own set of firsts - their first "family" vacation, the first time Kevin called Jim, "Dad," the first time Sheila called out "I love you" to Mary as she dashed to catch the school bus.

"With Sheila and Kevin we are now a complete family, and it is right for us," says Jim.



46 Number of children adopted out of foster care this year and now living in safe, permanent and loving homes.



I am a 14-year-old high school freshman. This morning I told my mom I was going to spend the night at my best friend's house - and then I went to the hospital and delivered a baby boy. I am scared to tell my parents about my child. No one knows except my boyfriend. He just left school and is on his way to the hospital to sign paperwork so we can place our baby for adoption. We are both frightened and confused. We don't know where to turn. Can you help me?

The CHS **Pregnancy and Birth Parent Counseling program** helps pregnant women in crisis and their families as they face an unplanned pregnancy. The counseling CHS provides is confidential, free and available 24 hours a day, seven days a week, 365 days a year.

For young women who face an unplanned pregnancy, talking with a CHS counselor is the lifeline they need to realize they are not alone. With counseling, some young mothers choose to parent and others choose to place their child with an adoptive family. In all cases, CHS is an advocate for the infant as the birth mother chooses the best outcome for her baby.

65 Number of birth mothers CHS counseled last year.

I am a young, single mother with two children (ages 4 and 2), and I just delivered a baby with significant medical challenges. My delivery was difficult, and I am neither physically nor mentally prepared to meet the needs of my new baby. The nurses tell me I will have to monitor his breathing all night, keep a shunt that was inserted in the back of his skull clean and use a feeding tube to nourish him. I want to be a good mother to my children, but I don't know what to do or if assistance is available. Can you help me?

The CHS **Temporary Foster Care program** provides a safe place for the baby while new mothers take time to consider their options or to make changes in their current living situation so they are prepared to parent. Temporary Foster Care is a free and confidential service, providing safe and loving care to newborns seven days a week, year round. Placement is temporary and the average stay is less than three months as compared to three years in the state foster care system. In this case, the baby was placed in a temporary home for a short time while the mother found better housing, secured appropriate child care and looked for a better job. She met with the foster family at each doctor and hospital visit and learned how to operate the special equipment, clean his shunt and use the feeding tube. Within four months, she was ready to parent and took over meeting the special needs of her youngest child. As CHS continues to monitor the case, it is clear the baby is doing well in her care.

2,903

Days of temporary foster care provided to children throughout Virginia



30

Number of infants placed with loving, adoptive parents



My husband and I are a young professional couple who struggled with infertility for three years. After undergoing practically every treatment possible, we are exhausted by the entire process and are thinking about international adoption. Can you help us?

Through the **Infant Adoption program**, CHS places healthy infants as well as infants with special needs into permanent families.

"We knew we wanted a baby: A tiny fist wrapped around our fingers. The smell of talcum powder. A coo, a cry, a cuddle," says a very excited Marta. "When we realized we couldn't have our own child, we found CHS."

She and her husband, Reggie, attended an orientation session, then met with social workers to complete a home study. The process helped prepare them for this day—the day they are taking their new daughter, 6-week old Isabella, home.

Margi Fields can speak from experience when she tells her friends how easy it is to adopt a child from the foster care system.

She and her husband have adopted two.

"I've spoken to at least 50 families about the great need," she said. "People perceive these children as damaged. I say, 'What is damaged?' We all have our challenges."

Margi and her husband, Jamie, adopted Grace, now 9, and Brianna, now 2, from the foster care system in 2003 and 2007, respectively. The couple already had two biological sons, Jarrett, now 18, and Brendan, now 16.

"We always talked about adopting," Jamie said. "There is just such a huge need."

In Virginia, nearly 1,500 children in the foster care system are waiting to be adopted into a permanent, loving home. Through the Partnership for Adoptions (PFA) program at Children's Home Society, social workers guide prospective parents through the adoption process with training, counseling and support. The outcome is truly amazing.

"We have two beautiful girls because of the gift of adoption," Jamie said. "What else is there to say?"

Started in 1998, the PFA program is a collaborative effort between CHS and 10 local departments of social services to get children out of foster care and into their "forever homes." The emphasis of the program is education. Parents receive eight weeks of training so they are as prepared as possible to parent a child who has been abused or neglected.

"It was wonderful," said Pat Bryant. She and her husband, Roy, adopted brothers Josh, 13, and Doug, 12, from foster care in 2008. The boys are Roy's great nephews. "The instructors had so many stories and case histories to share. They gave us the understanding as to why the behavior was."

The training covers everything from child development to attachment issues and is led by CHS staff and professionals from the mental health field, including a licensed psychologist.

"Understanding and dealing with a child's behavior requires an understanding of the impact of abuse and neglect," said Laura Ash-Brackley, director of the Partnership for Adoptions program. "And for prospective parents, the training is a great opportunity for them to decide if adoption is something they can do."

For the Bryants, the training helped them realize the importance of patience and forgiveness.

"You come to understand how what these children have been through can translate into behavior," Pat said. "You learn not to take things personally when they lash out. You learn to recognize the warning signs of an outburst and how to address them."

As with raising any child, the challenges can continue through the teenage years. CHS offers post-placement support for a lifetime.

"When you adopt an older child, they are already set in their ways," Pat said. "So there are challenges. We've had our moments, but we are all better for them. I wouldn't change a thing."

Neither would the boys.



Margi and Jamie with Brianna (back row); Jarrett, Grace and Brendan.

"When you are in foster care, it's like visiting someone you don't really know that well," Josh said. "When you are adopted, you are with your family."

Both the Bryants and the Fields provided foster care to their children before the adoption was finalized.

"My parents were foster parents for more than 10 years, and I always thought that was a wonderful thing," Margi said. "We wanted to do the same thing."

In 1999, the couple began fostering. They didn't expect to adopt so soon. But when Grace was placed in their home, they fell in love immediately. Her five siblings were placed in other homes.

"We thought she would only be with us for a little while," Margi said. "We were told she had relatives to go to. But that never worked out."

About a year later, the couple received a call about a 7-week-old baby abandoned at a trailer park. Jamie met the police there and brought Brianna home. The little girl was born addicted to heroin and went through several weeks of withdrawal.

"She cried all the time," Jamie said. "We were thinking, 'Can we really do this?'"

Gradually, Brianna improved. Social services located a relative and placed the child with her. "We were devastated," Margi said.

But the relative was battling health problems, and after being hospitalized seven weeks later, Brianna was returned to the Fields.

"I can't even begin to explain how we felt having her home," Margi said. "We are truly blessed."

Having a baby in the house along with two teenage boys, however, has been a challenge.

"It has its pros and cons," Margi said. "We have someone to help with the baby stuff. But we are dealing with teenage issues and the terrible twos. Sometimes, you can't tell the difference."

The Fields began considering adoption after Pat learned that Josh and Doug's biological mother may be placing them in foster care.

"I was in church and saw her crying with emotion," Pat said. The Fields began visiting the boys, had them over for weekend stays, then provided full-time foster care before the adoption was finalized about 18 months later.

"They are our family," Pat said. "We've been so blessed to see the potential of what they can be. For every child, there is a future."

By Janet Showalter

Steps to adopting a child from foster care

- Attend an orientation. CHS holds them regularly throughout the year. You can check our Web site, www.chsva.org for a schedule.
- Complete eight weeks of free training designed to help you parent a child who has been abused or neglected.
- Complete a home study.
- Welcome your child home.
- Participate in six months of supervision.
- Celebrate the finalization of your adoption.
- Receive a lifetime of free support from CHS.

To learn more, visit www.chsva.org/rumors or call CHS at (800) 247-2888 or (804) 353-0191



The Bryants, Roy (left), Doug, Josh and Pat.

Community Resource Board

CRB event—Raise the Roof

The Community Resource Board (CRB) raised \$32,500 for CHS at its fourth annual fundraiser in November, Raise the Roof. More than 225 guests gathered at Rolling Run Farm in Goochland County to enjoy the beautiful countryside. They dined on roasted oysters and barbeque while listening to the bluegrass band, Jackass Flats. Those more adventurous even rode a mechanical bull!

Held in November to coincide with National Adoption Month, all proceeds help CHS bring awareness to a growing concern and place more children in their “forever” homes, according to Event Chair Lindsay Adamson.



Lindsay Adamson, left, event chair and Kathy Tappen, chair



CRB Board of Directors

Kathy Tappen, Chair
Lindsay Adamson
Copeland Casati
Sarah Clark
Maria Cobb
Mary Ellen Garrigue
Sally Hirsch
Sarah Innes
Dana Kleinschuster
Kerry Lewis
Mary Omberg
DeAnn Pangburn
Letty Tate



Children's Home Society Memorial Fund, Inc.

Message from the Chair



The Children's Home Society of Virginia Memorial Fund Board was created in 2005 to oversee the endowment of the agency to ensure that CHS can continue to find permanent homes for future generations of Virginia's children.

As the economy faced challenges from the credit crisis, decline in the stock market and rising unemployment, our endowment has shrunk by approximately 20 percent.

Over the past four years, we have been fortunate to have received some significant bequests and grants from foundations to further the

work of the Society. Without their support, we simply could not exist today. To all these donors — large and small — we extend our heartfelt thanks!

The Foundation would like to express appreciation to Marie Diveley and Robert Mattauch, whose service on our board has ended, and to extend a warm welcome to John Barr, who agreed to join the board. My term as chairman ended on June 30. We are fortunate that Henry George has stepped forward to serve as the Memorial Foundation chair this year.

As we look toward the future, I believe we will succeed in our mission to broaden the base of donors, increase the annual giving and grow the endowment. With the continued work and creative energies of our staff and Boards, we shall succeed!

Sincerely,

Jack Williams
Chair



Golf Tournaments

The Fourth Annual Fall Golf Classic, a golf tournament organized by the Kiwanis Club of Tuckahoe held in October, raised \$12,000 for CHS.

The 14th Annual Wendy's Colonial Golf Classic was held in June to benefit CHS.

Board of Directors

John L. (Jack) Williams Chair	Thomas B. Davidson, Jr. Henry H. George
Robb Anderson	Hugh F. Gouldthorpe, Jr.
Donald Beck	Xavier R. Richardson
Evans Brasfield	Earl L. Young

CHS would like to recognize Ward C. Bourn as the newest member of the 1900 Society. A longtime donor to the CHS Annual Giving Campaign, Mr. Bourn is no stranger to philanthropy. He and his late wife supported various children's causes in other areas of the country before retiring in Williamsburg, Va. He recently made plans to support the future of CHS through the Jane L. and Ward C. Bourn Charitable Trust.

Children's Home Society of Virginia Memorial Fund, Inc.

Statement of Activities Year Ended June 30, 2009

<u>Assets</u>	<u>2009</u>
Cash and cash equivalents	\$ 98,284
Investments	2,915,933*
Interest Receivable	17,374
Total Assets	<u>\$3,031,591</u>

<u>Liabilities and Net Assets</u>	<u>2009</u>
Liabilities	\$ —
Net assets:	
Unrestricted	<u>\$3,031,591</u>
Total liabilities and net assets	<u>\$3,031,591</u>

	<u>2009</u>
Revenues (losses):	
Contributions	\$ —
Investment income (loss), net	(596,005)**
Total revenues (losses)	<u>(596,005)</u>
Expenses:	
Management and general	182,842
Support to affiliate	380,849
Total expenses	<u>563,691</u>
Change in net assets	(1,159,696)
Net assets, beginning of year	<u>4,191,287</u>
Net assets, end of year	<u>\$3,031,591</u>

	<u>Cost</u>	<u>Unrealized Gain (Loss)</u>	<u>Fair Value</u>
Fixed Income	1,210,402	\$ 62,657	\$1,273,059
Equities	1,302,367	(30,661)	1,271,706
Equity funds	456,657	(85,489)	371,168
	<u>\$2,969,426</u>	<u>\$53,493</u>	<u>\$2,915,933*</u>

	<u>2009</u>
Interest Income	\$ 66,332
Dividend Income	33,346
Realized and unrealized gains	(692,300)
Investment management expenses	(20,757)
Other income (expense)	17,374
Total investment income (loss), net	<u>\$(596,005)**</u>

Making a Difference

Ways of Giving

You can contribute to CHS in numerous ways, many of which support the agency while providing you with substantial tax and other financial benefits.

A gift of cash makes an immediate impact on CHS and can be made by check or credit card. Online gifts can be made at www.chsva.org.

A gift of appreciated securities is a cost effective way to support CHS.

Matching gifts to CHS may double or even triple your personal gift. Check with your employer to determine if they will match your charitable giving.

A life income gift such as a charitable gift annuity or a charitable remainder trust allows you to make a substantial gift to CHS while providing you and/or a beneficiary with an income stream

for life or a set number of years.

Retirement plans are becoming increasingly popular ways to give because of tax benefits for your estate.

A gift of life insurance is an easy way to give a gift to CHS. You can donate a policy that you currently own but no longer need or purchase a new policy.

A charitable lead trust gift can provide current income to CHS while preserving the trust assets for you and your beneficiaries.

Bequests of all sizes are welcome and are deductible for estate purposes. When you develop your estate plan please consider naming CHS in your will.

Please consult your tax advisor to determine your tax benefit.

1900 SOCIETY

1900 Society—those who have remembered CHS in their wills or who have otherwise made provisions in an estate plan. Remembering CHS in your estate plans is a testimony to your belief in our mission of finding permanent homes for all children and providing related services to birth families, adoptive families and adoptees.

Ward C. Bourn

Janet and George Larie

Grady and Diane Lewis

Penelope deBordenare Saffer

Micki Stout

Mrs. Rogers Williams Thorpe

Dr. and Mrs. H. Conrad Warlick

Kurt and Joan Wassen

Donors:

Cornerstone

\$10,000+

Dave Thomas Foundation for Adoption
Fredericksburg Savings Charitable Foundation
Kiwanis Club of Tuckahoe
Memorial Foundation for Children
Robins Foundation

Vanguard

\$5,000-\$9,999

Anonymous
Rose Greer Akers Trust
C. W. Brook Memorial Fund
Geraldine C. McDermott
Daniel O. Omer Trust
Dr. and Mrs. H. Conrad Warlick

Patron

\$2500-\$4,999

Alstom Power, Inc.
Flournoy-Threadcraft Trust
Laura J. Harris Trust
Henry H. George
Keiter, Stephens, Hurst, Gary & Shreaves
Mr. and Mrs. William A. Korn
MediCorp Health System
Old Dominion Security
Owens & Minor
Wilbur H. Palmer Trust
Rogie Williams Thorp
Robert A. Treakle, Jr. Trust
John L. Williams
Georgia T. Witt Trust

Guardian

\$1,000 - \$2,499

Phillip W. Avant
Mr. and Mrs. Richard Bellows
Judy L. Bristow
David S. Carter, Jr. and Nadine Marsh-Carter
Dennis Scott Chapman
Christian & Barton, LLP
Colfax
Arijit Bapi Dasgupta
James E. Farnham
William W. Flexon
Georgia Flournoy Trust
Jan H. Gray
Gilgit Charitable Trust
Mr. and Mrs. Fred D. Jolliffe
The Junior League of Roanoke Valley, VA, Inc.
Kiwanis Club of Roanoke VA, Inc.
Susan R. Knaysi
Philip S. Marstiller

Medical Equipment Distributors
Stephen P. Nash
Robert J. Nowak
Mary Jane O'Neill
Mr. and Mrs. Morton S. Roberts
Dr. Louise W. Robertson
Eileen G. Sadowski
William Whidbee Sale & Virginia B. Sale Foundation
Sam's Club Foundation
The Kathryn and W. Harry Schwarzschild Fund
Sylvia P. Sekerdy
Mr. and Mrs. Robert E. Shoun
UPS Foundation, Inc.
Gail O. Waechter
Wal-Mart
William A. Walsh, Jr.
Andrea S. Weber
Weimer and Boyce, Lawyers
Carmen A. White
Dr. and Mrs. John W. Willhide
Women of St. Stephen's Episcopal Church

Deborah Cox Wood
Dorothy C. Young and Alan H. Stone
Earl L. Young
Mr. and Mrs. William C. Yowell, Jr.





Benefactor \$500-\$999

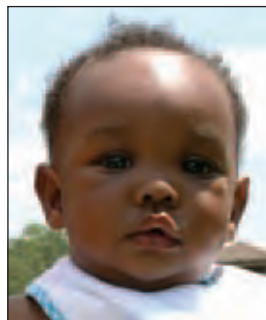
Mr. and Mrs. A. Marshall Acuff, Jr.
Altria Group, Inc.
Mr. and Mrs. Philip J. Anderson
John V. Antonietta
John S. Barr, Esq.
Donald C. Beck
William E. and Mablin T. Belvin Charitable Trust
Dr. and Mrs. E. J. Bowen
Mr. and Mrs. William G. Broaddus
Mr. and Mrs. Austin T. Brockenbrough III
Stewart Bryan III
C. F. Sauer Company
Alice B. Cobb
Andrew M. Condlin
Consolidated Bank & Trust
CSC Leasing Company
E. Marie T. Diveley
ECHO Employees Charity Organization
Janet C. Erkert
G. H. Moody Middle School
Mary Ellen Garrigue
Deborah B. Gordon
Nancy H. Gottwald
Mr. and Mrs. Thomas J. Hanrahan
Mattison W. Harris
Hirschler Fleischer
Olin V. Hyde
Sarah K. Innes
M. Kelley Johnston
Ruth G. Jones
George P. Keeley
Robert A. Kolock
Patricia B. Lee
Lowe Brockenbrough & Company, Inc.
The Honorable and Mrs. James Lumpkin
Sarah C. Maley
Dr. and Mrs. Norman E. McCoomer
McDonald's, SKR, Inc.
Mr. and Mrs. Steven A. McGraw, Sr.
Judy A. Melnyk
Roy M. Mentkow
Mr. and Mrs. Lewis N. Miller, Jr.
Robert H. Mitchell
Harold E. Moore
Susan Q. Moore
Bradford J. Nagel
Paragon Commercial Bank
Gloria Perry
Property Investment Advisors, Inc.
Dr. and Mrs. Lon Rademacher

Louis C. Richards
Martha Nolde Robertson
Josiah P. Rowe, III
Carolyn G. Saffer
The Scott Endowment Foundation
Jennifer H. Sgro
Clifton A. Sledge
Ann Louise Stephens
Micki L. Stout
Kathleen K. Tappen
Alletta L. Tate
The Tuckahoe Woman's Club
Barbara B. and James E. Ukrop-Fund of the Community Foundation *Serving Richmond and Central Virginia*
Mr. and Mrs. James E. Ukrop
Virginia Cardiovascular Specialists
Natalie K. Wargo
WellPoint Foundation
Mr. and Mrs. John Thomas West, IV
Kenneth R. White
Mr. and Mrs. John D. Whitlock
Mr. and Mrs. Mervin C. Withers
Woodfin Oil
Mr. and Mrs. William S. Wysong

Sustainer \$100-\$499

Osameh T. Abed
Oliver S. Adams, Jr.
Mr. and Mrs. William F. Adams
A. Lindsay B. Adamson
Norvell P. Adamson
Mr. and Mrs. Donald O. Allen
D. Neil Ashworth
Mr. and Mrs. Peter M. Asman
Carolyn G. Bahen
Beverly H. Baker
Bank of America
Catherine C. Barbour
Graceanne Barbour
Henry H. Barbour
Dennis W. Barnes
Leslie Bell
Mr. and Mrs. Fred G. Benham, III
James R. Bishop
Connie S. Blevins
Mary K. Bohn
Stockina R. Bolden
Lewis T. Booker
Raymond H. Boone
Ward C. Bourn
Angela Bowers
Sharon W. Bowers
Evans B. Brasfield
Susan H. Brewer
The Brink's Company
Mark Anthony Brown
Mary C. Broz-Vaughan

Grace E. Brubaker
Mildred Brumback
Theresa B. Bryant
Mary A. Buchanan Trust
Mr. and Mrs. Melvin C. Burbage, II
Sharon C. Burk
Mr. and Mrs. Guy V. Burnett
Mr. and Mrs. Howard J. Busbee, Sr.
Mr. and Mrs. Leonard J. Byers
Robert L. Byrd
Tinina Q. Cade
James H. Call
Robert F. Canova
Mr. and Mrs. Richard L. Carter
Copeland Casati
I. Bruce Cauthen
Keith L. Christian
The Church of Our Saviour
Belinda G. Church
Anita W. Churchill
Mr. and Mrs. Charles T. Clay
Carroll A. Cloninger
Maria S. Cobb
Regina P. Cobb
Mr. and Mrs. Roger A. Coggins
Mr. and Mrs. Dennis A. Coghill
Mr. and Mrs. John L. Comer, Jr.
Rodney W. Cooper II
Cassandra L. Cosner
Loren R. B. Costantino
Mary G. Coulbourn
James B. Crawford, Sr.
Mark R. Crombie and Lisbeth L. Prins
Marvin Nathaniel Dailey
Thomas B. Davidson, Jr.
Paul T. Davies
Elaine D. Davila
Mr. and Mrs. Douglas W. Davis
Michael W. Davis
Dr. and Mrs. Robert L. Deal
Mr. and Mrs. Bernard I. Dentz
Diane Dillard
Dominion Matching Gift Program
Johnilyn J. Doswell
Bettie P. Douglas
Lou N. Driskill
Mr. and Mrs. Charles R. Eaton
Ethel R. Eaton
Marion F. Ehrich
Anne N. Elcan
Karen S. Elliott
Barbara S. Ellis
Martha Anne Ellis
Mr. and Mrs. Roy T. Englert
Connie R. Etheredge
Carol L. Fariss



James L. Ferrara
Malika Finn
Craig S. Fisher
Mr. and Mrs. Steven D. Fisher
Dr. and Mrs. Thomas J. Fitzgerald

Myrtle B. Fore
Leroy Foreman
Hugh W. Foster
Michael G. Fountaine
Mr. and Mrs. Richard E. Fowlkes, Jr.
Joy C. Fuhr
Mr. and Mrs. Nevin H. Funk
Mr. and Mrs. Gerald F. Fuss, Sr.
Cdr. and Mrs. Paul E. Galanti
Debra D. Gardner
Mr. and Mrs. Thomas M. Gates
Lois W. Gibbs
Mr. and Mrs. Robert M. Giberson
Mr. and Mrs. Thomas D. Gilbert
Bonnie Gobble
Mr. and Mrs. Joseph C. Godsey, Jr.
Larry R. Godsey
John Paul L. Goode
Hugh F. Gouldthorpe, Jr.
George N. Grant Trust

Mr. and Mrs. J. Cameron Hoggan, Jr.
June B. Holman
Mr. and Mrs. Byron W. Holmes
Mr. and Mrs. Robert A. Holsten
Anne B. Holton
Tamera Sue Hornsby-Fink
Carol L. Huff
Mark R. Huffman
Cynthia B. Jenkins
Matthew D. Jenkins
Mr. and Mrs. Robert C. Jernigan
Mr. and Mrs. Robert W. Jones, Jr.
Barbara L. Jowaisas
Barbara P. Kelly
Lynne J. Kinder
Elizabeth M. King
Roger H. W. Kirby
Dayna K. Klein
Mr. and Mrs. Paul E. Kline
Mr. and Mrs. Dennis W. Knaack
Jane M. Joel Knox
Mr. and Mrs. Richard C. Kraemer



Mr. and Mrs. Granville Grant
Marilyn M. Graves
Anderson T. Gray
Carolyn A. Griffin
Kimberly J. Griffin
Mr. and Mrs. Cresencio Guerrero
Frances L. Hall
Hazel V. Hall
Milton Hall
Sarah J. Hallock
Linda S. Halter
Mary Jo Hancock
Marshall Freeman Harris
Norma A. Harris
The Honorable and Mrs. Robert L. Harris, Sr.
William R. Hawkins
Teresa A. Haynes
E. Bruce Heilman
Walter P. Hempfling
Vernard W. Henley
Erika N. Henson
Mr. and Mrs. Russell D. Hepler
Astrid G. Hicks
Pamela M. Hill

Gregory W. Kuehnle
Anne R. Lamerson
Lee A. Lang
Jeanne B. LaRose
Mr. and Mrs. Jay W. Lawler
Mr. and Mrs. Christopher J. Lee
Jotaynun Lee
Allen Grady Lewis III
John William Lewis
The Linhart Foundation
Robert J. Lockwood
Carolyn H. Loupassi
Linda T. Lyell
Joshua L. Mabrey
Kimberly M. Magee
Karen E. March
Jessica A. Markle
Diane H. Marsh
Frederick L. Marsh
Henry L. Marsh III
Martha A. Martin
Sgt. Maj. Kenneth M. Masoner
Mr. and Mrs. Richard V. Mattingly, Jr.
Mr. and Mrs. William B. May, Jr.
Dina T. McCray
Anna C. McCune

Mr. and Mrs. John L. McElroy, III
 Mr. and Mrs. Marcus B. McGahee
 Margaret D. McGrainor
 James V. Meath
 Maria Mehr
 Denise P. Merian
 Gail Rolle Miller
 Mark H. Miller, Esq.
 Charles F. Moore
 Elsie G. J. Moore
 Minnie C. Mountcastle
 Janet T. Murphy
 Rebekah A. Myers
 Melvin H. Nace
 Karen M. Nemetz
 Mr. and Mrs. Ian A. Nimmo
 Dr. and Mrs. Donald B. Nolan
 Northside Grille Restaurant, Inc.
 Mr. and Mrs. P. Bradley Nott, Jr.
 Elsa M. Nunez
 Amy L. O'Connell
 Lori J. Oliver
 Mary K. Omberg
 The Honorable and Mrs. Robert E. Payne
 Mr. and Mrs. Nae Hugh Pearson, Jr.
 Dewayne A. Plantin
 Stephanie A. Plaugher
 Angela Y. Pollard
 Julia W. Pollard
 Robert Dean Pope
 Camille E. Potts
 Cynthia S. Price
 Mr. and Mrs. Peter M. Pufki
 Mr. and Mrs. Karl D. Quam
 Mr. and Mrs. James A. Queen
 Patricia L. Quigley
 N. C. Ratliffe
 Mr. and Mrs. John Edward Rauck
 Charles L. Reed
 Mr. and Mrs. Steven A. Reich
 Rev. and Mrs. Richard M. Reid
 Edna M. Resor
 David W. Reynolds
 Rhoadesville Baptist Church
 Dr. and Mrs. James T. Rhodes
 Richmond Corrugated Box
 Dennis E. Riggle
 Mr. and Mrs. Thomas W. Roberts



Carole D. Rush
 Mr. and Mrs. Armistead T. Saffer
 Penelope deBordenave Saffer
 Catherine H. Sakowski
 Mr. and Mrs. J. Howard Salmons, Sr.
 Michelle Samms
 Joshua J. Sanchez
 Patrick J. Sanderson
 Dr. and Mrs. Lawrence R. Sarmiere
 Michael J. Saweikis
 Richard S. Schweiker, Jr.
 Mr. and Mrs. Cullen D. Seltzer
 Henry W. Sheffler

Joshua N. Shields
 Mr. and Mrs. Theodore G. Shuey, Jr.
 R.A. Siewers, Inc. Lumber & Millwork
 Warren L. Snead, Jr.
 Mr. and Mrs. Mark J. Soltysiak
 Mr. and Mrs. Jack H. Spain, Jr.
 Alfreda Denise G. Sparrow
 Mr. and Mrs. James D. Spivey
 Timothy P. Stewart
 Martha R. Stimpson



Stith and Drumgold Family Reunion
 Andrew Stott
 Tuesday C. Stott
 Mr. and Mrs. Donald C. Stratton
 Joanne N. Street
 Laurel M. Strickland
 Catherine P. Svoboda
 Mr. and Mrs. John K. Taylor
 Carl P. Taylor, Jr.
 John A. Taylor
 Monica L. Taylor
 S. Diane Taylor
 Mr. and Mrs. Harold C. Thaxton
 Elaine G. Thompson
 Gary E. Thompson
 Mr. and Mrs. Haywood A. Thornton
 Elizabeth P. Tillson
 Sharon Y. Timmons
 Ith Chhay Tomko
 Mr. and Mrs. Peter C. Toms
 Nilda R. Torres
 Anthony L. Tracy
 Catherine V. Tune
 Robert O. Tyler
 Robert S. Ukrop
 Ukrop's Super Markets, Inc.
 Mr. and Mrs. William Underhill
 Union Bank & Trust
 United Way of Central Virginia, Inc.
 Jay Valvo
 Margaret W. Vandermark
 Nichole B. Vanderslice
 Mr. and Mrs. Robert Frank Vasquez
 Rodricucuz C. Vaughn
 Mr. and Mrs. John A. Venuti, Jr.
 April S. Vest
 Virginia Properties
 Amanda V. Vizcarra
 Wachovia Insurance Services, Inc.
 Ephfrom R. Walker III
 Mr. and Mrs. John P. Waller
 Jeffrey A. Walter

Lesley A. Walter
 Barbara S. Warner
 Steven B. Warner
 Joan W. Wassen
 Mr. and Mrs. Edwin W. Watson
 Stevie G. Watson
 Laura L. Weaver
 Mr. and Mrs. George Welch, Jr.
 William E. Welch
 Marilyn H. West
 Jerry P. Westwater

Donald L. Wetherington
 Mary Elizabeth Whartenby
 Alfred E. W. Wheeler
 Charitable Remainder Trust
 Dr. and Mrs. James L. White
 Mary F. White
 Michelle A. Whitlock
 Ann D. Wick
 Cynthia M. Wilkinson
 L. Benjamin Wilkinson
 Mr. and Mrs. Daniel L. Williams
 Erskine A. Williams
 Fielding L. Williams, Jr.
 Mr. and Mrs. Mark A. Williams
 Mary Alice H. Williams
 Sadie M. Williams
 Mr. and Mrs. John B. Williamson
 Mr. and Mrs. Thomas S. Williamson, III
 Janet H. Wills
 Debra A. Wilson
 F. Quimby Wingfield, Jr.
 Nadine C. Wingfield
 Bonnie W. Winn
 Mr. and Mrs. Frank J. Wittman
 Charles R. Wood
 Josephine E. Wood
 Jayshawn A. Wright
 Lisa D. Wright
 Dr. and Mrs. Melville G. Wright, III
 WXLK K-92 Radio

Friend
 up to \$99

Mr. and Mrs. Kashmie Ali
 Mr. and Mrs. Howard O. Allen
 Kenneth E. Andrews
 Eleanor T. Angle
 Mr. and Mrs. John M. Antrim
 Charles J. Ashby
 Mr. and Mrs. Albert K. Atkinson
 Sally T. Bagley
 Robert K. Bailey, III
 Sheryl D. Bailey

Gary W. Baker
 Laura B. Bateman
 Mary E. Beard
 Mr. and Mrs. J. Edward Betts
 Anthony J. Binga
 Mr. and Mrs. Joseph E. Blackburn, Jr.
 Mr. and Mrs. Stephen M. Blazek
 Christil D. Blowe-Cates
 Michael A. Bourdeau
 Henry A. Bowen
 Mr. and Mrs. W. B. Bradley
 Mr. and Mrs. Joseph L. Brockman
 Zbigniew Brodzik
 Barbara U. Brooks
 Jeanette B. Brooks
 Mr. and Mrs. Bert R. Brown
 Patricia L. Bryant
 Dana M. Buchanan
 Joyce A. Buford
 Mr. and Mrs. Robert A. Bullock, Jr.
 Mr. and Mrs. David D. Burhans
 Judy B. Burks
 Melissa J. Burton
 Virginia W. Burton
 C. Stacey Carden
 Mr. and Mrs. James Richard Carling
 Janet H. Carter
 Lewis M. Carter
 Suzanne H. Casey
 Dottie D. Cavnor
 Theresa A. Chandler
 Louise W. Clary
 Nell H. Cobb
 Charlene B. Cobbins
 Tammy M. Coburn
 Mr. and Mrs. Shubert Cockfield
 Judith B. Collins
 Frances S. Concklin
 Kimberley W. Cosby
 Mr. and Mrs. Jude T. Craddock
 Gary Allen Craighead
 Peggy L. Cribbs
 Mr. and Mrs. Thomas F. Crowder



Janet L. Cummings
 Marilyn S. Custer
 Elizabeth A. Cuthbert
 The Honorable and Mrs. James F. D'Alton, Jr.
 Department of Technology Employees
 Regina A. DePumpo
 Mr. and Mrs. David L. Diamond
 Susan Dowdy
 Walter E. Drudge
 Patricia R. Dumond
 Severn P. C. Duvall
 Earl's Welders Supply Company
 Audrey G. Eggleston
 Lawrence J. Elinskas
 F. Wade Evans
 Fairview Christian Women's Fellowship
 Mr. and Mrs. Charles M. Faught
 Robert J. Feldman
 Sandra Ferguson
 Yvonne T. Ferguson
 Mr. and Mrs. Carl H. Fischer
 Mr. and Mrs. Albert Dean Gardner
 Sandra N. Garrett
 Gazette-Journal Employees
 Erin D. Gill
 Gloucester Realty Corporation
 Lloyd Gochenour
 Dawn P. Gomez
 John S. Goode
 Mr. and Mrs. Jack R. Gordon
 Kathy S. Gravell
 Dorothy Graves
 The Honorable and Mrs. J. Frank Greenwalt, Jr.
 Tomisina R. Gregory-Johnson
 Dorothy A. Griffin
 Mr. and Mrs. Raymond D. Gritsko
 Charlotte V. Grubbs
 Lucille E. Hahn
 Grayson A. Harding
 Christina M. Harris
 Deborah A. Harsh
 Deja S. Hatch
 Mr. and Mrs. Howard F. Heller



Tammy T. Heller
Mr. and Mrs. Donlie R.
Henderson
Erik J. Herrmann
Carlene E. Hicks
Mr. and Mrs. Edgar Hicks
Mr. and Mrs. James R. Hiner, II
Sally Irizarry Hirsch
Justin M. Hix
M. Jane Hotchkiss
Mr. and Mrs. David A.
Houghton
Ashley M. Hughes
Charlotte S. Hughes
Joyce B. Hughes
Mr. and Mrs. William M.
Hulvey
William C. Hungerford
Robert K. Hyde
Michael J. Imhoff, Jr.
Mr. and Mrs. John Robert
Irvin
Mr. and Mrs. William G.
Jackson
Yolanda T. Jackson
Mr. and Mrs. Lewis A. Jamison
Mr. and Mrs. F. Edwin Jarvis
Michael J. Jesensky
Karen Brownell Johnson
Karen W. Johnson
Sally Burch Johnson
Jennifer L. Kanard
Tara Lynn Karnes
Mr. and Mrs. James P.
Kastelberg
Ann L. Kauffman
G. Paul Keeley, Jr.
Esther E. Kibler
Linda T. Kijek
Pamela S. King
Dana A. Kleinschuster
Barbara Kudravetz
Catherine A. Kyle
LaCrosse United Methodist
Church
Mr. and Mrs. Louis G. Lassiter
Ann T. Lawson
Tamar C. Ledbetter
Mr. and Mrs. Michael A. Lee

Elizabeth J. Lennox
Levy's Richmond Store
Kerry Ann Lewis
Teonda S. Lewis
Mr. and Mrs. Langdon Lindsey
Philomena B. Lockwood
Virginia L. Long
Mr. and Mrs. Kevin M. Lowe
Mary Frances Luck
Natalie C. Lynch
Macaulay & Burtch, P.C.
Michael C. Macey
William M. Mackey, Jr.
Mildred M. Marshall
David H. Martin
Tanya D. Martin
Elizabeth W. Mason
Tamara P. Mason
Louise T. McDearmon
Mr. and Mrs. Reginald D.
McGlone
Cdr. and Mrs. H. P. McNeal
Emily June McSwain
Mr. and Mrs. Eric P. Melzig
Kimberly O. Menges
Hugh S. Meredith
Martin J. Miller
Rebecca M. Miller
Nancy R. Mitchell
Paul F. Moller
Delia C. Montgomery
Mr. and Mrs. Thurston R.
Moore
Stephanie P. Morrell
Nancy E. Morris
Mike J. Magee
Maria C. Munoz
Leigh E. Murphy
The Honorable and Mrs. W.
Taylor Murphy, Jr.
Byrd L. Murray
Lewis C. Napier, Jr.
Sarah K. Nearhood
New Hope Christian
Women's Fellowship
Thuy T. Nguyen
Teresa Ann Nicely
Genevieve T. Ornduff
Margaret Lee Overton

Cynthia M. Owens
Elaine R. Owens
Sarah Evelyn Page
Thomas B. Parker
David B. Parrish, Jr.
Carolyn C. Patterson
Mr. and Mrs. Philip L. Payne
Craig E. Peterson
William H. Peterson
Mr. and Mrs. James I. Pollock
Connie A. Pool
Mr. and Mrs. Francis A.
Prezio
Nancy B. Prisk
Patricia L. Quigley
Russell L. Rabb, Jr.
Eunice T. Ramey
Renee B. Ramos
Mr. and Mrs. Maynard W.
Randolph
Pamela C. Reilly
Lisa A. Richardson
Mr. and Mrs. Wesley
Richardson
Mr. and Mrs. William A.
Richardson, Jr.
The Honorable Angela E.
Roberts
Mary H. Roberts
Mr. and Mrs. Haynie S.
Robertson, Jr.
Eleanor R. Roller
Lamar Rowe
Richard M. Sabo
Joan B. Sanger
Nanalou W. Sauder
Ann H. Sawyer
Lisa L. Schaffner
Peter C. Scholtes
Albert A. Schuetzle
Ronald J. Schulz
Paul F. Scott
Mr. and Mrs. Malcolm A.
Shaw
Janet C. Showalter
Michael Todd Simmons
Elizabeth M. Simos
James S. Simos
Casi B. Sims
Mary Seawell Smith
Paul R. Smith
Mr. and Mrs. Leo L. Snarr, Jr.
Shannon E. Snellings
Laurie Y. Soleau
Mr. and Mrs. Dwain Spencer
Mr. and Mrs. Charles T.
Spivey
Lonnie L. Spruce

Phyllis M. Stith
Gracie Gray Story
Christine L. Straub
Beverly K. Suber
Brenda R. Sumler
Mr. and Mrs. David G. Sweet
Mr. and Mrs. J. B. Tankersley III
Christine L. Tanner
Janie H. Tarrant
Tarrara Woman's Club
James P. Tate, III
Mr. and Mrs. George E. Taylor
Gina T. Terlonge-Concepcion
Barry N. Thomas
Elizabeth R. Thomas
Virginia F. Thornton
Richard B. Thrasher, Jr.
George J. Tompkins
Katha M. Treanor
Than Thi Truong
Phyllis L. Turcotte
Vicki C. Turner
Drema A. Tuttle
United Health Group
Chamie G. Valentine
Lisa K. Van Riper

White III
Rebecca R. White
Rev. and Mrs. Roy P. White
Mary Alice B. Whitehead
Mr. and Mrs. Osbon L. Whitted
Jeannie G. Wiant
Mr. and Mrs. E. Otto N.
Williams, Jr.
Hobby Williams
Julien H. Williams
Mr. and Mrs. Mark W.
Williams
James E. Wilson
Mary E. Wines
Lester Wingfield
Hiram Wolf
Anthony W. Wright
Margaret S. Wright
Mr. and Mrs. Robert M.
Young
Jinxing Yu
Feng Yue
Paolo Cesar J. Yuson
Mei Zhang



Esther H. Vassar
Darma L. Vaughan
Susan M. Vest
Jeffrey T. Walker
Rev. and Mrs. Curtis Wall
Twila A. Waller
Wal-Mart
Mr. and Mrs. Larry E. Ward
Paula J. Weaver
Fay S. Webb
Mr. and Mrs. Harold T. Wertz
Mr. and Mrs. B. W. White, Jr.
Rev. and Mrs. Elijah B.





Memorial and Honor Tributes

Memorializing or honoring a loved one through charitable gifts is a meaningful act of paying tribute to someone special while supporting Children's Home Society programs.

Memorial Gifts

CHS received gifts in memory of the people listed below.

Virginia Lee Adolph
Susan Galleher Askew
Claudia "Pinky" Bates
Martha Foster Carter
Sarah Elizabeth Hudson
Cloninger
Watson Barrett Cobb
Peter Colo
Marie C. Deere
B. B. Donson
Avis Dove
William E. Fears
Rachel M. Fisher
Julie Ann Fuss
David M. Glascok
Virginia Lee Hilderbrandt
Mildred S. Hudgins
Bill & Jill Jackson
Irene Lane
Hunter William Lutz
William T. McDermott
Alaina R. Mentkow
James M. Monroe
Robert L. Morin
Mary Phyllis Moyer
Sydney A. Nace
Veronica C. Nowak
Todd Ornduff
Emma Pankey
David Frankman Peters
Charles and Sylvia Prisk
Cheryl Marie Quigley
Anne Wilson Rowe
Blanche H. Sadler
Thornton D. Saffer

Irma W. Seifert
Ena H. Shaw
Ramsay R. Smith
Mary Sivils Waff
David L. Walker
Adelaide A. Wolf

Honor Gifts

CHS received gifts during the year honoring the following people.

All the CHSVA staff
The Andrews Family, Celie Gehring, Kate Weiss & Win Howell
William A. Armbruster
Elizabeth Bellows
Catherine Cloninger Biggs
Nicholas Hudson Biggs
Sandy & EJ Bowen
Jessica Aber Brumberg
Stephen D. Busch
Kaitlyn & David Carter
Copeland Casati
Blake Douglas
Ernest E. Fisher
Edward J. Fuhr
Henry H. George
Lois Ann Gibbs
Jeff Gordon
Marshall Freeman & Kay Harris
David Hartley
Jean Stimpson Haskell
Christian E. Henneke
Richard Hensley
Cristin Quigley Hirely
Sally Irizarry Hirsch
Collin J. Hite
Friends & neighbors of Micki Stout
Virginia Jenkins
Frederic Todd Jolliffe
William H. King, Jr.
Peter Kinsella
Jazmonae Ledbetter
Verena Leismann
Lois MacGoey
Diane Harris Marsh
Nadine Marsh-Carter
Lily Masucci
Christine B. McAllister
Sean McCaskey
John & Meg Meneke

Patricia Mattingly Montague
Daniel Moore
Harold E. Moore
My children Andrew and Ayrim
Virginia L. H. Nesbitt
Vanessa M. Nielsen
Our three adult children and 5 grand kids
Meredith Withers Pearson
Chris & Terry Price
Peter M. Pufki
Jontille D. Fowler Ray
Armistead Saffer
Penelope Saffer
Thornton D. Saffer
Maria Saffer-Cobb
Lisa M. Sharp
Tyler Sheets
Eva Marie Simos
Jarek David Soltysiak
Micki L. Stout
Matthew S. Strader
Ted A. Swanson
Samuel Tarry
Alletta L. Tate
R. Trent Taylor
Kemper W. Thornton
J. Tracy Walker IV
Jesse, Patrick & Suzanne Walsh
Anne S. Warlick
Jacquelyn Wesolosky
David and Kathryn Whartenby
Lewis Wiley
Jack and Betty Williams & Kemper Thornton
John L. Williams
Steven R. Williams
Lynn Smith Wright
Bill and Patsy Young
Robert Young

In-kind Donors

CHS receives many gifts other than in financial form. We are grateful to the following individuals and businesses who made in-kind gifts.

Airbrush Gypsy
BJ's Wholesale Club

Belle Mount Vineyards
Ben & Jerry's
Boar's Head Inn
Bogey's Sports Park Inc.
Gilpin Brown
copeland casati media
Chapel Rug Outlet
Chick-Fil-A
Children's Museum of Richmond
City Ice
Coca-Cola
Colonial Downs
Lynda Cooksey
Corporate & Museum Frame
Lona and Gill Crittenden
Herbert Dunford, Jr.
Fun Bus
Funny Bone Comedy Club
Andy Garrique
Gelalti Celesti
G-Force Karts
Holiday Barn Pet Resort
Homemades by Suzanne
Interbake Foods, Inc.
Jason Deli
Jefferson Vineyards
Luray Zoo & Reptile Center

Metro Richmond Zoo
Mill Mountain Zoo
Montfair Resort Farm
Moonstruck Amusements
Old Dominion Security Company
Party Perfect
Peak Experiences
Prospect Hill Plantation & Restaurant
Puritan Cleaners
Qdoba Mexican Grill
Rappahannock Cellars
Rigsby Jig Dance Studio
RR Donnelley Printing
Silver Diner
Southern States, Inc.
Louise Spangler
Splash DJ
Stony point Fashion Park
Target Marketing
Ukrop's Super Markets
Universal Ford
Virginia Air & Space Museum
Virginia Zoo
Wal-Mart
West End Plants & Produce
Wintergreen Resort

Thank You

CHS thanks you for your generous contributions. It is through your philanthropy that CHS continues to create families and serve Virginia's children. The donor listing reflects all contributions and pledges received between July 1, 2008 and June 30, 2009. We sincerely apologize if there are any omissions. If you should see any, please contact the Development Office at 804-353-0191 so we can correct the record.

*"Life breaks everyone,
and afterward, some
are strong at the
broken places."
—Ernest Hemingway*

Offices

Richmond
4200 Fitzhugh Avenue
Richmond, VA 23230
(804) 353-0191
(800) 247-2888

Fredericksburg
2300 Fall Hill Avenue
Suite 238
Fredericksburg, VA
22401
(540) 226-0583

Children's Home Society of Virginia is a private, nonprofit adoption agency serving the entire Commonwealth. We find permanent homes for all children and provide related services to birth families, adoptive families and adoptees.



Every child deserves a home.

4200 Fitzhugh Avenue, Richmond, Virginia 23230

Non-Profit
Organization
U.S. Postage
PAID
Richmond, VA
Permit No. 675

Our Mission

*To find permanent homes for all
children and provide related services
to birth families, adoptive
families and adoptees*



www.CHSVA.org