

THANKS  
to you,  
LIVES ARE  
transformed.

—  
2015 – 2016  
Annual Report





# CONTENTS

## 3 OUR MISSION

4 Letter from the Chairman and President

## 5 THANKS TO YOU, SUCCESS IS POSSIBLE

7 2016 Highlights  
9 CHS Financials  
10 By the Numbers Impact Report

## 11 THANKS TO YOU, FUTURES ARE BRIGHTER

13 Infant Adoption  
15 Foster Care Adoption Program  
17 Post Adoption Program  
19 The Possibilities Project

## 23 THE POSSIBILITIES PROJECT INFO SHEET

## 25 THANKS TO YOU, SUPPORT IS GIVEN

26 Donor Lists 2015-2016  
36 Donate Now



# BOARD OF DIRECTORS

We thank you for all of your help this past year

## CHILDREN'S HOME SOCIETY BOARD 2015-2016

<b>Edward Lumpkin</b> , <i>Chair</i>	Christian & Barton, L.L.P.
<b>Kathy Wall</b> , <i>Chair Elect</i>	Mary Washington Health Care
<b>Kelley Johnston</b> , <i>Immediate Past Chair</i>	Acuity Management Solutions
<b>Mary Nedell</b> , <i>Secretary</i>	Valued Supporter
<b>Melvin Tull III</b> , <i>Treasurer</i>	Virginia Bankers Association
<b>Amanda Barden</b>	Valued Supporter
<b>Sherry Boyce</b>	Valued Supporter
<b>Lyons Hardy Burke</b>	Valued Supporter
<b>Allyson Evenson</b>	Owens & Minor
<b>James Farnham</b>	Hunton & Williams, retired
<b>Sally Irizarry Hirsch</b>	W. Hirsch Oriental Rugs
<b>Eucharía "Ukay" Jackson</b>	Valued Supporter
<b>Thomas Johnstone IV</b>	Office of the Attorney General
<b>Monica Manns</b>	C&M Education Group
<b>Mark Morton</b>	Morton Consulting

## MEMORIAL FUND BOARD 2015-2016

<b>J. Robb Anderson</b>	NewClients Promotional Marketing
<b>John S. Barr</b>	McGuire Woods
<b>Thomas Goode</b>	Wells Fargo
<b>Bruce C. Gottwald Jr.</b>	Jonah, LLC
<b>M. Kelley Johnston</b>	Acuity Management Solutions
<b>Christopher Konstantinos</b>	RiverFront Investment Group, LLC
<b>Xavier R. Richardson</b>	Mary Washington Hospital Foundation Snowden House
<b>Janet H. Wills</b>	The Wills Financial Group



**OUR MISSION** is to build strong permanent families and lifelong relationships for Virginia's at-risk children.



Thanks to you, young lives and families throughout Virginia have been positively impacted and our entire commonwealth is strengthened.

## LETTER FROM THE CHAIR AND CEO

### Building strong families, one child at a time

It has been a year of extraordinary accomplishments at Children's Home Society of Virginia — and we could not have done it without you! We are both so proud to be part of a team of community-focused supporters, visionary board leaders, outstanding collaborative partners, dedicated social workers, and loving families who all share our passion that every child be part of a thriving family. This annual report reflects the spectrum of services that CHS now provides our vulnerable children — from the infant born with drugs in his system, to the brothers who want to be adopted before they start high school, to the 18 year old who faces homelessness because she has aged out of foster care. CHS continues its 116+ year legacy of service by offering a continuum of compassionate, impactful programs.

During this fiscal year, CHS has strategically expanded our programs and deepened our capacity for service by:

- Launching The Possibilities Project, an innovative and collaborative program in partnership with the Better Housing Coalition, which provides housing and myriad critical supports to youth who are alone and face dire outcomes because they have “aged out” of foster care at age 18, without any support systems or healthy family connections
- Beginning new collaborative partnerships with organizations—like the Better Housing Coalition—to strategically strengthen our service capacity to CHS clients
- Serving more than 183 children and families through our adoption, counseling and training programs

It takes resources to deliver the spectrum of services CHS is providing Virginia's at-risk children and families. As we have expanded our services to respond to the community's needs, our own funding and volunteer needs have also expanded. The lives transformed by CHS's work clearly prove the value of our increased investment in creating strong families. As a CHS adoptee who was placed with his loving, supportive family as an infant and as a CHS adoptive parent whose family was created through adoption, we have both experienced first-hand the powerful, life changing impact of our agency's work. Our lives are real examples of how CHS has, and will, continue to transform our community for the better — one child at a time!

At CHS we know that strong families are the cornerstone of a strong community. So we again thank you for your interest in and commitment to our agency's mission!

Thanks to you, young lives and families throughout Virginia have been positively impacted and our entire commonwealth is strengthened.

Gratefully,

*Eddie*

Edward Lumpkin  
CHS Board Chairman  
& Adoptee

*Nadine*

Nadine Marsh-Carter  
CHS President, CEO,  
& Adoptive Parent



# THANKS to you, SUCCESS is possible.



You help us make a difference every day — to the continuum of at-risk infants, children and young adults — for whom we find forever homes and provide emotional and concrete support. Thanks to you, Children's Home Society now successfully provides critical guidance and loving relationships to young adults who have aged out of foster care. We look forward to continuing to help our entire community of youth — together.





# 7 2016 HIGHLIGHTS

## Annual events and success stories make up our best memories of 2016

### 2016 VIRGINIA GENERAL ASSEMBLY LEGISLATIVE BRIEFING

In January, CHS hosted its 4th Annual Legislative Briefing at the Virginia General Assembly. The event was attended by representatives from the Virginia State Senate and House of Delegates, CHS Board members, community leaders, and volunteers from Impact 100 and staff from CHS and our Possibilities Project partner, the Better Housing Coalition.

During the briefing, CHS and BHC leadership shared information about the plight of Virginia children waiting to be adopted out of foster care, and about Fostering Futures — legislation that addresses needs of youth who “age out” of foster care. Afterwards, our delegation headed over to the State Capitol, where we were recognized by the House of Delegates.

All this capped off a productive week in which community volunteers, including Impact 100 members, connected with our legislative representatives to share important information about foster care.

### CWGA GOLFING HEROINES

On April 9, a very cold, windy, and even a snowy Saturday, Crossings Women's Golf Association members held their Invitational Golf Tournament to benefit Children's Home Society. The golfers planned a wonderful fun packed event and the generous sponsors contributed to the raffle, silent auction and contest prizes. **Over \$12,000 was raised to support CHS!**

### AWARD WINNING CHS FAMILY AND SOCIAL WORKER

In 2014, CHS Wendy's Wonderful Kids Recruiter Krista Watson helped to match single dad, Steven Effinger, with two brothers who were waiting to be adopted. Krista's job is to find adoptive homes for the hardest to place kids in foster care, typically older teens with significant needs. Steven came to CHS to explore adoption after having had meaningful experiences as a mentor to at-risk young men. Krista's efforts ensured that Richard and Jeffery (then ages 17 and 14) were adopted by Steven in August of 2015.

Since that time, Krista has been recognized as recipient of the Outstanding Adoption Story of the Year award at the 2016 Wendy's Wonderful Kids Adoption Summit. In addition, Steven Effinger has been honored with a prestigious National Adoption Award from the U.S. Department of Health and Human Services.

Both boys have excelled as members of Steven's family. Richard graduated high school, attends community college, and holds a job. He is 19 years old and thriving under the care of a permanent family. Jeffery, now 16, has obtained his learner's permit and has also left an alternative program to return to mainstream school. Steven continues to provide a loving home and guidance to these remarkable young men.

### SECOND ANNUAL WATERMELON FESTIVAL BOOK SALE

Thanks to Sally Hirsch, W. Hirsch Oriental Rugs again sponsored a book sale held August 9, 2015 during the Carytown Watermelon Festival benefiting CHS. Thousands of donated books were gathered during the book drive. Dedicated volunteers organized the books by categories; children's, history and cookbooks were popular subjects and many families left with bags full of books. **CHS is honored to help keep gently used and well-loved books in circulation, and appreciates the support from Sally and our community!**

### A VERY THOUGHTFUL BIRTHDAY REQUEST

Lacey Neff decided for her eighth birthday party she would like to have a “donations” party. She asked her guests to donate gift cards for the young adults who have aged out of foster care, and are now enrolled in The Possibilities Project. Bless you Lacey!



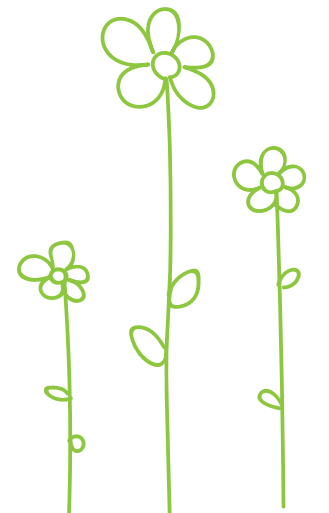
### SEVENTH ANNUAL LEGACY BREAKFAST AT LEWIS GINTER BOTANICAL GARDEN

On a beautiful spring morning, CHS welcomed keynote speaker Christopher Mooney, Head Basketball Coach of the University of Richmond. Coach Mooney spoke about how a team functions together to achieve their goals, much like a family!

There was much more on the agenda! The premier of the new CHS video ‘What is Family’ was screened, and Nadine emphasized that “everyone can help solve problems facing children in foster care.” 50¢ coins were placed at each table setting to illustrate Virginia's dead last rank of 50th for children who age out of foster care without being adopted. Youth Advocate Janeva Smith shared her personal struggles of growing up in the foster care system, and Natalie Newfield, longtime supporter of CHS, inspired the audience to make a pledge to join the Legacy Society.

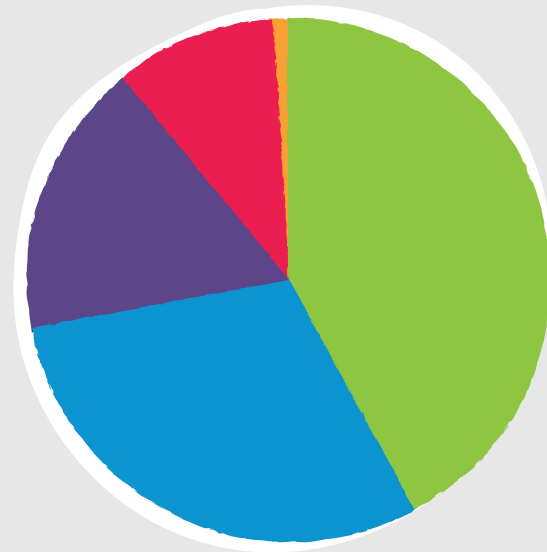
#### Thanks to our Legacy Breakfast 2016 sponsors:

Gold	Estes Express Lines
Silver	Hunton & Williams
Silver	Christian & Barton, LLP
Bronze	Thompson McMullen, P.C.
Bronze	Mary Washington Healthcare
Bronze	ACG Advisory Services, Inc.



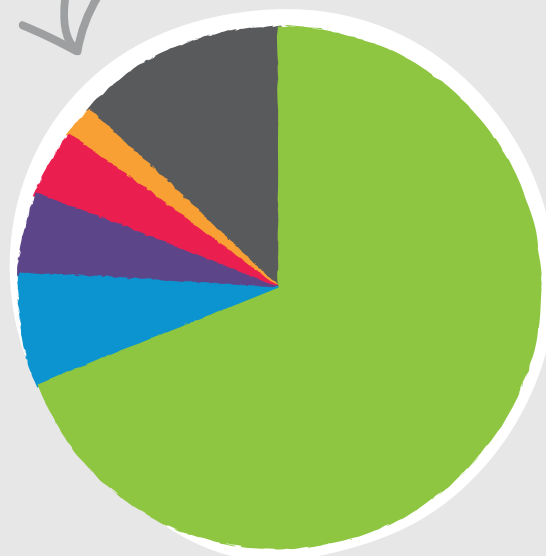
# CHS FINANCIALS

REVENUE = \$1,194,469



- 42% contributed
- 30% foundations
- 17% government reimbursement
- 10% program fees
- 1% in kind

EXPENSES = \$1,312,191



- 69% personnel
- 7% specific assistance to clients
- 5% professional fees
- 4% office
- 2% building
- 13% other

Though budgeted, in Fiscal Year 2016, CHS elected not to transfer any funds from the Memorial Fund to the CHS operating accounts to take advantage of the investment opportunities presented in the Memorial Fund. The budgeted transfer would have resulted in an operating surplus.

# BY THE NUMBERS IMPACT REPORT

785



customers served across all programs

24 at-risk infants were served

240 days of Temporary Infant Care provided

41 birth parents were provided counseling



foster youth served = 93

- 43% part of a sibling group
- 29% had birth parents who abused substances
- 31% were in 4+ foster care placements
- 37 foster youth were adopted
- 52% experienced physical and/or sexual abuse
- 35 foster youth were matched with a family
- 51% experienced significant neglect

183 parents and children received post-adoption services, including training related to trauma and parenting

19 interviewed and assessed for The Possibilities Project Program

7 young people moved into The Possibilities Project housing by June, after the program began in March 2015



# THANKS to you, FUTURES are brighter.



Our programs work with kids and families all along the spectrum of growing up, but our results for them are always the same: build a brighter future for those most in need. With your help, support and participation, we can all be proud that we have impacted the lives of infants, children and young adults for the rest of their productive and successful lives.







# INFANT ADOPTION

We help mothers when they need it most

For women who are pregnant or who have just delivered a baby, our trained social workers offer free, unbiased counseling support to help explore her options—with complete confidentiality. At CHS, we work with birth mothers and birth fathers during a difficult time, and help them develop a plan that's best for them and their child. We counsel birth mothers and birth fathers during the pregnancy, and we provide counseling and other support services after the baby is born.

## WHAT INFANT ADOPTION PROVIDES



**CONFIDENTIAL COUNSELING**  
All services to birth parents are free of charge.



**PLACEMENT OPTIONS**  
This includes birth parents choosing a family or we choose a family.

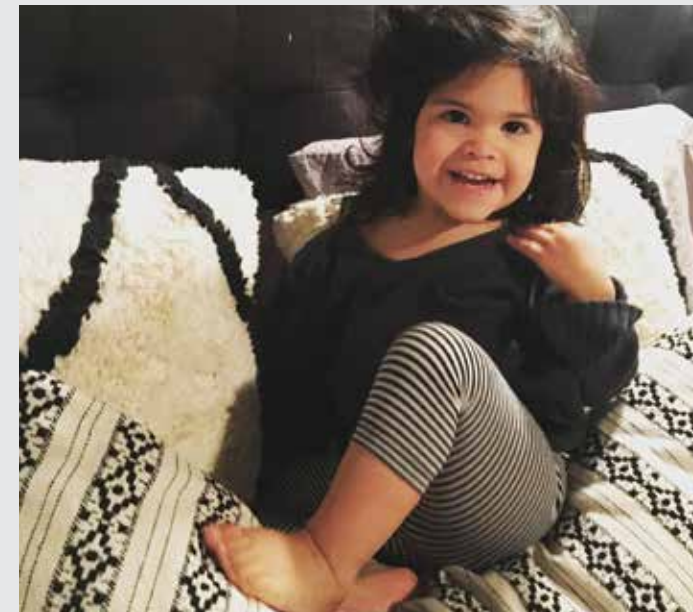


**ADOPTION**  
We place healthy and special needs children for adoption.



**SUPPORT AND REFERRALS**  
Medical care, financial, housing, and other assistance before or after birth.

## INFANT ADOPTION SNAPSHOT



**Riley** was born to a birth-mother who was homeless with mental health issues, but was working with a pregnancy center who contacted CHS. We then introduced her to an adoptive family who had worked with CHS for several years. The birth-mother placed the baby with the adoptive family a few days after discharging from the hospital. She was relieved that she was able to have an open parental placement adoption for her daughter. Riley's adoption was finalized this summer.

The open parental placement adoption program allowed Riley's birth-mother to be confident in her decision of choosing a family for her daughter.







# FOSTER CARE ADOPTION PROGRAM

## Finding perfect matches for waiting children

In this type of adoption, a local Department of Social Services (DSS) has custody of a waiting child, and all parental rights to the child have been legally terminated. CHS works with prospective families who would like to adopt a child or teen, focusing on ages 12 and older as they tend to be the longest waiting children. Families participate in an approval process that includes training and a home study. CHS then matches them with a waiting child based on his or her individual needs, personality, and background. CHS guides the legal adoption process during which the child becomes a permanent member of the family. Many aspects of this process at CHS are funded by a grant from the State Department of Social Services.

## WHAT FOSTER CARE ADOPTION PROVIDES



PARENT RECRUITMENT & TRAINING



HOME STUDY APPROVAL



ADOPTION PREPARATION FOR THE YOUTH



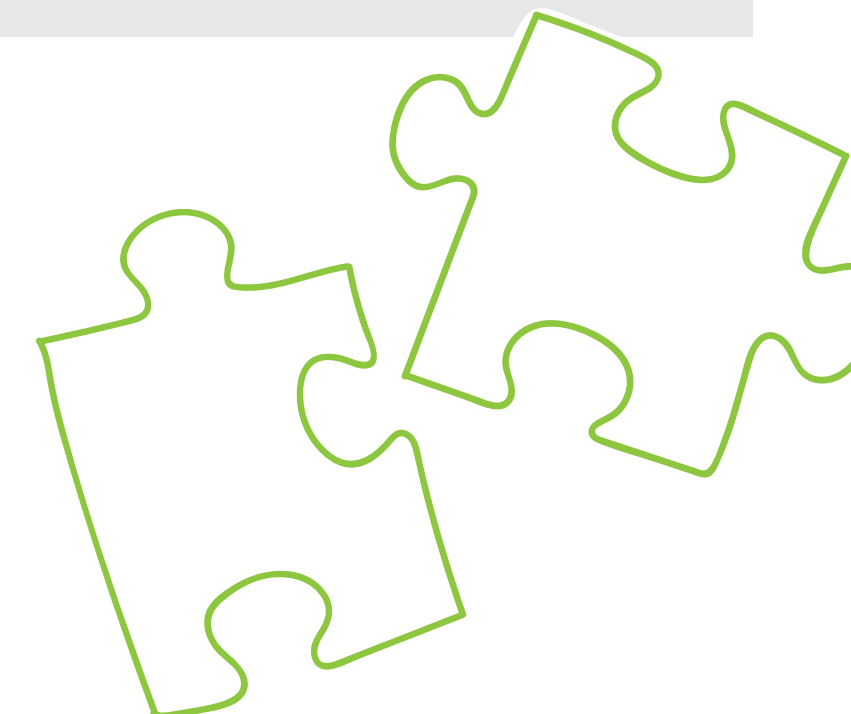
MATCHING WAITING CHILDREN WITH FAMILIES

## FOSTER CARE ADOPTION SNAPSHOT



**Nicole**, 18 years old, came into foster care when she was fifteen years old. Although Nicole felt like she could survive on her own, CHS began talking with her about adoption and what it would mean to have the lifelong support of a family. Together, Nicole and her social worker identified a family that she already knew – her friend's parents! When asked, the family said that of course they could provide a forever home for Nicole. They went through the approval process to be adoptive parents with CHS, and just after her 17<sup>th</sup> birthday, Nicole moved in with her new family. Nicole worked hard to graduate high school on time, and she looks forward to attending community college in the fall. Nicole's adoption finalized in July of 2016, just shy of her 18<sup>th</sup> birthday. Instead of becoming another "aged out" statistic, Nicole has the family support that every young person needs.

Instead of becoming another "aged out" statistic, Nicole has the family support that every young person needs.







# POST ADOPTION PROGRAM

## Providing services for positive growth and development

Our Post Adoption Program at CHS has grown greatly in breadth and structure. We now offer three different services to adoptive and pre-adoptive families. Parent Coaching is an intensive, clinical service that provides families weekly support in therapeutic parenting and navigating the adoption process. We start working with families when they are matched with an adoptive child and continue working with them through the legal finalization of the adoption and beyond. Family Support Services are offered to families who need help with resources, advocacy and understanding challenges at different developmental stages. This service allows families to access short term support to help their family navigate difficult periods. Respite Services, including Kids' Club, are offered to allow parents of adoptive children opportunities for child care that are provided with their children's needs in mind. We maintain a low staff to child ratio with staff trained in trauma and attachment principles and offer 8 programs a year. During these days adoptive children can openly discuss their adoptive experience and work on skills in a supportive environment. All services are offered at no, or minimal cost to families and are available to any adoptive family interested; our goal is to help adoptive families form with healthy family dynamics and the building blocks for successful, permanent relationships.

**Our goal is to help adoptive families form with healthy family dynamics and the building blocks for successful, permanent relationships.**

## WHAT POST ADOPTION PROVIDES



PARENT COACHING



EDUCATION AND TRAINING



FAMILY SUPPORT SERVICES



RESPIRE OPPORTUNITIES



## POST ADOPTION PROGRAM SNAPSHOT



**The Johnston family** worked with CHS five years ago to adopt their son and, after just a few years, decided to grow again through adoption. After completing the home study process, they agreed to have a foster youth stay with them for a weekend as a means of providing respite to another foster family. The child who came to visit was **Karen**, an outgoing teenage girl; they knew instantly they wanted her to be a part of their family.

However, after eight different placements, Karen was hesitant about being adopted. The family worked closely with our Post Adoption Social Worker to understand her needs and to help her feel welcome in their home. They even advocated on her behalf to remain in her current school for 8th grade. She and her foster brother have attended Kid's Clubs together, and it's clear that they were meant to be siblings. The family has successfully bonded with her through the language of a teenager...music, shopping and just goofing around. They make her laugh. And, she has made their bond permanent — two weeks ago she signed an agreement officially accepting them as her permanent family!

**The family worked closely with our Post Adoption Social Worker to understand her needs and to help her feel welcome in their home.**





# THE POSSIBILITIES PROJECT

Building brighter futures for teens aging out of foster care

The young people of The Possibilities Project, a collaborative new program developed in partnership with the Better Housing Coalition, come to us from challenging circumstances. In addition to aging out of foster care, many were homeless before joining TPP. Some were living on the streets, others in rat-infested boarding homes. Others were couch-surfing after being kicked out of their homes. Still others were struggling to make ends meet and feeling anxious about their futures. They joined TPP having lived through a wide array of trauma, loss and extraordinary hardships throughout their young lives.

Despite these adversities, the program participants are remarkable and inspiring people. They have big dreams, goals and aspirations. They are resilient, hardworking, and determined to craft better lives for themselves. With the intensive support of TPP staff, they are grasping the belief that they deserve better than being destitute, worrying every day where their next meal is coming from, where they will lay their heads at night, or if they will be safe. Now they have the time and energy to consider their next steps and make progress towards their dreams and brighter futures.

In the short time since joining the program, their achievements have been incredible:

- **67%** are currently employed, compared to just 28% when they began the program
- **44%** are registered for college classes, significantly higher than the national average of 3-10% of emancipated foster youth enrolled in college
- **100%** of the program participants report that they are dedicated to continuing their education through either college or vocational training and 33% have enrolled in vocational training
- **100%** now have access to medical insurance and mental health services
- **100%** of program participants report feeling supported by CHS's TPP staff, and feeling that our program staff is "invested in their success." For many, this is the first time they've felt that another adult was invested in them for no other reason than the desire to see them thrive

## WHAT THE POSSIBILITIES PROJECT PROVIDES

Our Project goal is to empower these young people and change the trajectory of their lives. As part of The Possibilities Project, we offer them:

 <b>TRANSPORTATION</b> without which getting to and from school and work would not be possible.	 <b>INTERNET ACCESS</b> for applying for jobs and completing coursework	 <b>CASE MANAGEMENT</b> once a week to ensure they are progressing towards their goals and to offer support.	 <b>QUALITY HOUSING &amp; ALL UTILITIES</b> to move from surviving to thriving	
 <b>JOB READINESS &amp; JOB SEARCH TRAINING</b>	 <b>SUPPORT NETWORKS</b> of caring community members	 <b>MENTORING &amp; PERMANENT CONNECTIONS</b>	 <b>BASIC LIVING STIPENDS &amp; EMERGENCY FUNDS</b>	 <b>CLEANING &amp; HOME SAFETY TRAINING</b>
 <b>MEDICAL CARE &amp; MENTAL HEALTH COUNSELING</b>	 <b>WELLNESS ASSESSMENTS &amp; TRAINING</b>	 <b>COOKING &amp; NUTRITIONAL TRAINING</b>	 <b>BUDGETING &amp; DEBT MANAGEMENT SKILLS</b>	

## THE POSSIBILITIES PROJECT SNAPSHOT



**James** came to us pending eviction after almost 2 years of homelessness. He spent some nights sleeping on cardboard boxes outside in downtown Richmond, and at times was "lucky enough" to find a couch or a floor to sleep on. Even homeless, James managed to occasionally find part-time work, but never earned enough money to ensure a weeks' worth of meals or to save any money towards stable housing. He eventually ended up living in a "rooming house" with several other adults, many of whom were drug addicts, or had violent criminal histories. In this rat- and roach-infested house, the room designated to him was actually a closet with a mattress for which he paid \$400 per month. Several months behind on rent, he was given notice to vacate just before he was accepted into The Possibilities Project. Despite all of his hardships and instability, James became involved with a local vocational training program. Since joining the program in March, James was granted a paid internship, began working towards his CDL and wants to resume working towards his long-term goal of completing his 4-year degree.

With your support, each young person in *The Possibilities Project* will achieve independence and acquire healthy, permanent connections to adults who will provide a lifetime of support and guidance.



## YOUR INVESTMENT IN VIRGINIA'S FUTURE

Your support of Foster Care Adoption and TPP is a critical investment in the future of these young people — and in the future of Virginia.

**\$16,000**

to support placing a child who is in foster care into a permanent home

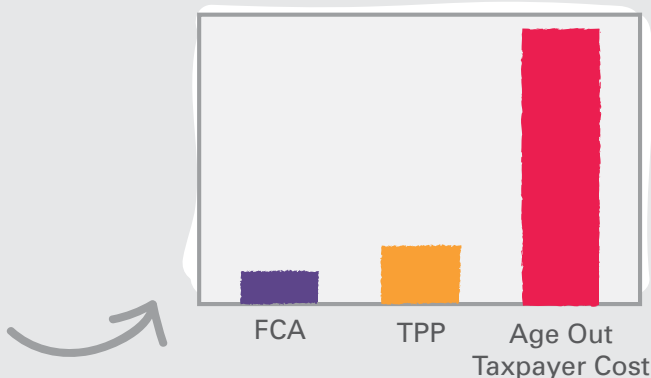
**\$30,000**

to support one young adult in The Possibilities Project for one year

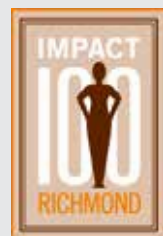
Youth who age out of foster care incur on average over

**\$300,000**

in social costs over their lifetime. This includes **taxpayer funded costs** such as public assistance and incarceration, increased medical costs and lost tax revenues.



## THE POSSIBILITIES PROJECT SUPPORTING FUNDS



The **Impact 100 Richmond Giving Circle** selected The Possibilities Project in a selective competition to be the recipient of a \$100,000 grant in May of 2015. Impact 100's grant allowed TPP to move forward with hiring staff and preparing the housing that would be used in the Project. The Impact 100 grant had an enormous effect on TPP's ability to launch. It also had a ripple effect by assuring other donors that TPP had competitively gained the support of hundreds of powerful and philanthropic women who saw the incredible impact the Project could have on our youth and community. CHS and Better Housing Coalition are extremely grateful for the support of Impact 100.

*"We see this innovative program both as a model for effective collaboration and as a long-term investment in youth that will pay dividends for years to come."*

### CHS IS GRATEFUL FOR THE COMMUNITY FOUNDATION'S SUPPORT

CHS and Better Housing Coalition are extremely grateful for the generous support of numerous investors in The Possibilities Project, including The Community Foundation Serving Richmond and Central Virginia:

"At the Community Foundation, we believe we have a role in advancing solutions that help enhance economic prosperity in the region, including safe and affordable housing, effective workforce development and financial literacy programs. That is why we are proud supporters of The Possibilities Project, because it does all of this and more. By combining these same essential services with trauma informed counseling, The Possibilities Project gives extremely vulnerable and underserved young adults a chance to become productive, contributing members of society. We see this innovative program both as a model for effective collaboration and as a long-term investment in youth that will pay dividends for years to come."

Sherrie Brach  
Armstrong  
President and CEO

# YOUR GIFT MAKES OUR PROGRAMS POSSIBLE. THANKS FOR YOUR SUPPORT!

**DONATE NOW**



4200 Fitzhugh Avenue, Richmond, VA 23230 | Phone: 804.353.0191 | Toll-free: 800.247.2888 | Fax: 804.353.7451 | [chsva.org](http://chsva.org)





# the possibilities project

Empowering Former Foster Youth



### Our Collaboration

**The Possibilities Project is a collaboration between two Richmond-based nonprofits:**

#### Children's Home Society of Virginia

A full-service adoption agency, committed to building lifelong relationships for Virginia's at-risk youth and transforming our community so that all young people are able to thrive.

#### Better Housing Coalition

A community development organization, founded in 1988, focused on changing lives and transforming communities through high-quality, affordable housing.

### Why This Matters

**Virginia is ranked worst of the 50 states for the rate at which teens age out of foster care without being adopted by a permanent family.**

Every year, about 500 young people "age out" of Virginia's foster care system. Often, they are sent into the world with nothing—no reliable housing, no job options, no education, no transportation, no life skills, and no supportive relationships. Like most 18-year-olds, they're not prepared to be fully on their own. Yet their challenges are compounded by histories of abuse, abandonment, and instability.

#### The outcomes are devastating:

- 1 in 4 will be incarcerated within 2 years
- 1 in 5 will be homeless within 2 years
- Fewer than 1 in 6 graduate from high school
- They face higher rates of unemployment, substance abuse, teen pregnancy, domestic violence, and more.

### Our Plan

**The Possibilities Project invests in youth aging out of foster care and changes the trajectory of their lives.**

Our two-phased initiative establishes and provides the best services, settings, and policies to support and lift this vulnerable population, in order to empower them to be engaged, productive, and successful members of our community.

#### PHASE 1

Launch a research-based two-year demonstration project in Richmond to provide young people with housing and trauma-informed social supports. Conduct a nationwide study on other states' approach to the challenges faced by these young people.

#### PHASE 2

Using Phase One research, results, and insights, develop a permanent housing and best-practices-based support program to serve as a replicable model for this region, Virginia, and other states.

# the possibilities project [chsva.org/possibilities](http://chsva.org/possibilities)



### Information

Program Manager, Lavinia Hurley  
804.353.0191 x334 ■ [lavinia@chsva.org](mailto:lavinia@chsva.org)

### Donate & Support

CHS President & CEO, Nadine Marsh-Carter  
804.353.0191 x260 ■ [nadine@chsva.org](mailto:nadine@chsva.org)

**Children's Home Society of Virginia**  
[chsva.org](http://chsva.org) ■ 804.353.0191

**Better Housing Coalition**  
[betterhousingcoalition.org](http://betterhousingcoalition.org) ■ 804.644.0546

### Our Program

**The Possibilities Project empowers youth ages 18 to 25 who have aged out of Virginia foster care.**

In addition to safe, stable housing, we provide trauma-informed therapeutic counseling, along with networks to build permanent connections with adults to offer a lifetime of support and guidance.

We invest in each young person's success by securing access to basic needs like transportation, internet, a living expense stipend, and life skills training—like nutritious meal planning, how to create a budget, interviewing skills, and more. All young people in the program will have a roommate, for mutual support, accountability, and relationship building.

**Each young person is unique, with unique needs and dreams. To ensure a smooth transition, each youth will be:**

- mentored as they pursue their own educational and career goals
- offered opportunities to grow through personal discovery experiences like cultural events, sports and recreational activities, and hobbies
- encouraged to engage with their community and build civic responsibility through advocacy, service, and leadership opportunities



**Our ultimate goal is to empower these vulnerable young people to achieve independence and personal success, thus transforming their lives and the communities to which they belong.**

### Our Goal

**The Possibilities Project will create a best-practice model designed for Virginia.**

Our research with Child Trends, a nationally recognized research firm, has surveyed programs and policies across the country addressing the plight of youth who age out of foster care. We use this to identify best practices with the most potential impact to improve the lives of Virginia's at-risk youth.

Our demonstration project is revealing essential insights about the specific needs of youth who age out of foster care—including social, emotional, educational, vocational, and others—so that we can better understand who they are, what they need, and how best to help them change the trajectory of their lives.

This research and experience will be the basis to inform, develop, prioritize, and promote systemic changes to ensure Virginia's human service policies are updated in alignment with best practices—and ultimately improve services for these at-risk youth. In addition, it will shape the evolution of the demonstration project into a permanent programming and housing model that can be replicated in Virginia and beyond.



# THANKS to you, SUPPORT is given.

—  
2015 – 2016  
Donor Lists







# DONOR APPRECIATION

Your donations are key to supporting our children

## LEGACY SOCIETY

Our Legacy Society supporters have each made a multi-year pledge of at least \$1,000 per year. CHS depends on these gifts to continue growing to respond to the needs of children and families in our community. We view our Legacy Society members as important partners in fulfilling our mission — today and in the future.

Mona D. Albertine  
John V. Antonietta  
Amanda B. Barden  
John and Patsy Barr  
Susan W. Begley  
Sandra D. Bowen  
Boyce & Leahy Lawyers  
Stephanie Brown  
Ellen and Duncan Buoyer  
S. Lyons H. Burke  
Louise H. Corderman  
Tanya M. Cummings  
Joseph E. Dunn  
William W. Flexon  
Reginald Ford  
Regina M. Fuller  
Teresa M. Gallagher  
Shelby Brown Gleason  
Charles and Yvonne Gold  
Bruce C. Gottwald, Jr.  
Anderson Tolman Gray

Beverly H. Cliff Guy  
Jina Winifred Haikey  
Eva Teig Hardy  
Valerie Hardy  
Dr. and Mrs. E. Bruce Heilman  
Hertless Brothers Roofing, Inc.  
Pamela M. Hill  
George and Carol Jennison  
Dale Johnson-Raney and Gene Raney  
M. Kelley Johnston  
Tommy and Carrie Johnstone  
Susan R. Knaysi  
Chris and Jenny Konstantinos  
Scott and Nichole Labott  
Michael and Janet Laming  
Edward and Erin Lumpkin  
Shane and Sarah Maley  
Monica Manns and Jimmy Robinson  
Diane H. Marsh  
Henry L. Marsh, III  
Nadine Marsh-Carter  
Mary Washington Healthcare  
William G. McClure, III  
Daniel McMurtrie and Kerry Lewis  
Christine Hunter Morin  
Mark D. Morton  
W. Angus and Barbara Muir  
Suzanne V. Neibauer  
Mark and Natalie Newfield  
Hartwell H. Roper  
Virginia Ford Ross

Pamela H. Schutz  
Marianne A. Seay  
Shaka Smart  
Michael and Allison Smith  
Andy and Jill Stefanovich  
Micki L. Stout  
Elaine Therese Summerfield  
Alletta L. Tate  
Carol M. Thalhimier  
Rogie Williams Thorp  
Kathryn S. Wall  
William A. Walsh, Jr.  
Marilyn H. West  
Alda L. White  
Kriss Wilson  
Linda D. Worrell  
Susan B. Worrell  
Brook Wright  
John Alan Young  
Carlton Zanders  
Carrol E. Zanders

## 2016 New Legacy Society Members

William and Sherry Boyce  
DeAnn and David Pangburn  
Kenneth W. Janes  
Mr. and Mrs. Charles E. Coreth  
Tracey Deal  
Ellen A. Moseley  
Matthew Houston Irvine  
Christopher Mooney

## OUR 1900 SOCIETY

Our 1900 Society supporters have taken the generous step of making provisions for CHS in their wills or estate plans. These gifts are a testimony to each individual's deep belief in our mission, as well as their level of commitment to making a difference in the lives of Virginia's children and families.

Ward C. Bourn  
William and Grace Broaddus  
Jan H. Gray  
M. Kelley Johnston  
Janet and George Larie  
Grady and Diane Lewis  
Nadine Marsh-Carter  
Jennifer Sgro Orfield  
Penelope de Bordenave Saffer  
Micki L. Stout  
Rogie Williams Thorp  
Katherine Burch Tyler\*  
H. Conrad and Anne S. Warlick  
Kurt and Joan Wassen  
Marion Ceaser Wheeler\*  
William and Hazel Wysong  
Anne D. Wood\*  
Mary Johnson Gilchrist \*

## DONORS

### Cornerstone \$10,000+

Rose Greer Akers Charitable Trust  
Altria Companies Employee Community Fund  
Judith Haskell Brewer Fund of The Community Foundation Serving Richmond and Central Virginia  
Brookfield Foundation  
The Community Foundation Serving Richmond & Central Virginia  
Fredericksburg Savings Charitable Foundation  
Martha Henna Harris Endowment Fund of the Community Foundation Serving Richmond and Central Virginia  
Annabella Jenkins Foundation  
Georgia Flournoy Portsmouth Irrevocable Trust  
Mr. Bruce C. Gottwald, Jr.  
Mr. and Mrs. William A. Korn  
The Nelson Family Fund of The Community Foundation Serving Richmond & Central Virginia  
Christine Kane Plant Charitable Fund of The Community Foundation Serving Richmond and Central Virginia

J. Curtis Spath Fund of The Community Foundation Serving Richmond & Central Virginia  
Dave Thomas Foundation for Adoption  
Edgar Thurman Foundation for Children Testamentary Trust  
Robert A. Treakle, Jr. Trust  
United Way of Greater Richmond  
United Way of Rappahannock  
Dr. and Mrs. Melville G. Wright, III

### Vanguard \$5,000 – \$9,999

C. W. Brook Memorial Fund  
Mr. and Mrs. Ellis M. Dunkum  
Estes Express Line  
Mr. Jones I. Flevey, II  
Yvonne and Charles Gold Donor Advised Fund of Richmond Jewish Foundation  
Ms. Eva Teig Hardy  
Ms. Rachel Hunziker C/O Old North State Trust, LLC  
Kunkel Family Foundation of The Community Foundation Serving Richmond and Central Virginia  
Wilbur H. Palmer U/W Trust  
Robins Foundation  
Schwab Charitable  
Barbara J. Thalhimier & William B. Thalhimier, Jr. Family Fund of The Community Foundation Serving Richmond and Central Virginia  
SunTrust United Way Campaign  
The Virginia Baptist Foundation, Inc.  
Wills Financial Group, Inc.  
Xenith Charitable Foundation, Inc.

### Patron \$2,500 – \$4,999

Christian & Barton, LLP  
Ms. Tanya M. Cummings  
Hunton & Williams  
Laura J. Harris - Testamentary Trust  
Owens & Minor  
Ms. Susan S. Schmidt  
SweetFrog Enterprises  
Trust

### Guardian \$1,000 – \$2,499

Ms. Mona D. Albertine  
Mrs. Beverly H. Baker  
Ms. Amanda B. Barden  
Mr. John S. Barr, Esq.  
Mr. and Mrs. Thomas Bell  
Mr. and Mrs. Richard B. Bellows  
William E. and Mablin T. Belvin Charitable Trust

Ms. Sandra D. Bowen  
Mr. and Mrs. William C. Boyce, Jr.  
Ms. Stephanie Brown  
Mrs. Ellen F. Buoyer  
Dr. and Mrs. George Burke III  
Commonwealth of Virginia Campaign  
Mr. and Mrs. Charles E. Coreth  
CWGA Crossings Women's Golf Association  
Mr. and Mrs. Jonathan S. Diveley  
Dominion Employee Giving Program  
Brandi Evans Fose  
Mr. and Mrs. William Evenson  
Mr. and Mrs. James E. Farnham  
Fidelity Charitable Gift Fund  
Mr. and Mrs. Joseph Finnegan  
Ms. Regina M. Fuller  
Fulton Bank  
Mr. and Mrs. Henry H. George  
Gilgit Charitable Trust  
Hertless Brothers Roofing, Inc.  
Ms. Pamela M. Hill  
Mrs. Sally I. Hirsch  
Ms. Tiffany Jacobsen  
Mr. and Mrs. George K. Jennison  
Mr. Gene Raney and Mrs. Dale Johnson-Raney  
Ms. M. Kelley Johnston  
Mrs. Jane M. Joel Knox  
Mr. and Mrs. Christopher J. Konstantinos  
Mr. and Mrs. Scott Labott  
Mr. and Mrs. Edward B. Lumpkin  
The Hon. and Mrs. James M. Lumpkin  
Ms. Sarah B. Maley  
Mr. and Mrs. Steve A. Markel  
Sen. Henry L. Marsh, III  
Mrs. Nadine Marsh-Carter  
David R. McGeorge Car Co., Inc.  
Mary Washington Healthcare  
Mr. and Mrs. William B. May, Jr.  
Mr. and Mrs. Christopher Mooney  
Ms. Ellen A. Moseley  
Ms. Suzanne V. Neibauer  
Ms. Natalie K. Newfield  
Mr. and Mrs. Donald H. Newlin  
DeAnn and David Pangburn  
Ms. Elizabeth B. Pearce  
Peterson Family Foundation  
Dr. and Mrs. Robert L. Pienkowski  
The Community Foundation of the Rappahannock River Region  
Mr. and Mrs. Morton S. Roberts  
Carrie Rule  
Ms. Pamela S. Schutz  
Mr. Shaka Smart  
Mr. and Mrs. Michael A. Smith





Ms. Jeanne L. Sobol  
 Mr. James M. Stacia  
 Mr. Richard A. Sebastian and Ms. Elaine T. Summerfield  
 Ms. Susan Karn  
 T. Rowe Price Foundation  
 Tesco Foundation, LLC  
 Thompson McMullen, PC  
 Mr. and Mrs. J. Timothy Thornton  
 Mr. Melvin E. Tull, III  
 United Way of South Hampton Roads  
 Mr. and Mrs. Robert Frank Vasquez  
 Ms. Kathryn S. Wall  
 Ms. Leah Wehinger  
 Edward Williams  
 Ms. Linda D. Worrell  
 Mr. John A. Young  
 Mr. Carlon Zanders  
 Mr. Carrol Zanders

#### Benefactor \$500 – \$999

ACG Advisory Services, Inc.  
 Anonymous  
 Dr. D. Neil Ashworth  
 Bank of America, Matching Gifts Program  
 Mr. Fred G. Benham, III  
 The Honorable and Mrs. James W. Benton, Jr.  
 Bergen County United Way's Charitable Flex Fund  
 Mrs. J. Stewart Bryan, III  
 Mary A. Buchanan Trust  
 Mr. and Mrs. J. Stefan Cametas  
 Chicago Clearing Corporation  
 Colfax Corporation  
 Ms. Eileen M. Crean

Mr. and Mrs. H. Benson Dendy, III  
 Mr. William W. Flexon  
 Ms. Laura L. Grimes  
 Riverfront Investment Group  
 Joelle and James Cosby  
 Julian H. & Ruth D. Dymacek Foundation  
 Ms. Lisa M. Karl  
 Mr. and Mrs. Charles G. Lewis  
 Ms. Nancy R. Little  
 Lowe, Brockenbrough & Company, Inc.  
 Sgt. Maj. Kenneth M. Masoner  
 Ms. Debbi Mintz  
 David W. Norfrey  
 Ms. Lisbeth L. Prins  
 Mr. Xavier R. Richardson  
 The San Francisco Foundation, Harold M. Marsh Fund for Justice  
 The Kathryn and W. Harry Schwarzschild Fund  
 Mrs. Linda C. Smith  
 St. Christopher's School  
 Ms. Micki L. Stout  
 Mrs. Kemper W. Thornton  
 United Way of Central Virginia, Inc.  
 United Way of Chester County PA  
 United Way of Delaware  
 United Way of Greater Philadelphia and Southern New Jersey  
 Dr. and Mrs. H. Conrad Warlick  
 Ms. Robert H. Patterson, Jr.  
 Ms. Kriss Wilson  
 Mr. Jim Wright

#### Sustainer \$100 – \$499

Ruth Albert  
 Mr. and Mrs. Edward V. Allison, Jr.

Ms. Rita N. Angel  
 Angie L. Shaffer-Anderson and Marie A. Shaffer  
 Anonymous  
 Combined Federal Campaign, United Way of National Capital Area  
 Dr. and Mrs. Michael Armstrong  
 Ms. Karen H. Ash  
 The Sterling Family  
 Ms. Sally T. Bagley  
 Mr. Robert K. Bailey  
 Dr. Sheryl D. Bailey  
 Mr. and Mrs. Dwight G. Barkley  
 Mr. Dennis W. Barnes  
 Mr. Donald C. Beck  
 The Benevity Community Impact Fund  
 Better Bodies Chiropractic, P.C.  
 Ms. Barbara S. Biggerstaff  
 Mr. Michael Biliunas  
 Stephen J. and Maura Dean Bittner  
 Mr. Ward C. Bourn  
 Ms. Melissa W. Brannan  
 Mr. Evans B. Brasfield  
 Ms. Susan H. Brewer  
 Brink's Company  
 Mr. and Mrs. William G. Broaddus  
 Mr. Jeffrey L. Brugh  
 Miss Mildred Brumback  
 Ms. Jean Bryan  
 Ms. Margaret M. Bryan  
 Mr. and Mrs. Guy V. Burnett

## A FAMILY LEGACY

**Stuart Gilchrist** graciously served the Children's Home Society of Virginia for more than a quarter of a century. In 1942, Mr. Gilchrist was first elected to the Board of Directors where he served in various roles until his death in 1969. Stuart Gilchrist Jr. and his wife Mary Johnson also have a long history of support for Children's Home Society. **Mary Johnson Gilchrist**, who passed away in 2014, left a bequest to Children's Home Society which will carry on the family tradition of loyalty and concern for the children of Virginia needing permanent homes.

Mr. and Mrs. Leonard J. Byers  
 C & C Hair Company Inc.  
 Matthew Cheek  
 Ms. Joy Cimburke  
 Mr. and Mrs. Raymond G. Cobb  
 Ms. Regina P. Cobb  
 Ms. Bambi Coker  
 Mrs. Norma J. Coggins  
 The Colangelo/Phalen Family Legacy Fund of the Community Foundation of the Rappahannock River Region  
 Ms. Marilyn E. Cole  
 Ms. Judith B. Collins  
 Comfort Systems, Inc.  
 Mrs. Patricia O. Compton  
 Mr. and Mrs. Jerry B. Copes  
 Mr. and Mrs. William Coughlin  
 Mr. and Mrs. David S. Smith  
 Mr. Joseph Michael David  
 Mr. and Mrs. Robert E. David  
 Deb and Dinka Daniel  
 Ms. Regina A. DePumpo  
 Mr. Kevin J. Doloresco  
 Mr. and Mrs. Basil C. Doumas  
 Mr. William A. Driskill  
 Durk and Nancy Steed  
 Edward and Anne Peck  
 Mr. and Mrs. Roger W. Ehrich  
 Mr. and Mrs. Roy T. Englert  
 Christine Ertell  
 Valerie J. Farmer  
 Ms. Claudia T. Farr  
 Ms. Wanda Fisher  
 Mrs. Myrtle B. Fore  
 Ms. Sherry Fox  
 Ms. Teri Frank  
 Ms. Ruth Franklin  
 Mrs. Amy Caruso Gay  
 Mr. Ronald D. Glassman  
 Ms. Kathleen Graeber  
 George and Marilyn Graves  
 Roland Grondin  
 Mr. Andrew D. Guggenheim  
 Mr. and Mrs. David J. Hajek  
 Ms. Candace A. Haske  
 The Hearing Aid Store  
 Heather Tomlinson/Jayme Varao  
 Mr. and Mrs. Steven Heidecker  
 Helen and Chip Nunley  
 Dr. Walter P. Hempfling  
 Ms. Jennifer C. Hepler  
 Mrs. Elizabeth G. Hille  
 Ms. Jill Hinton  
 Ms. Rhonda B. Hobson  
 Ms. Maureen F. Hoffman

Mrs. Jane A. Horowitz  
 Mr. and Mrs. Harold E. Huffman  
 Young Women's Christian League, Imprimis Chapter  
 J. A. Seed & Associates, LLC  
 Ms. Eucharina N. Jackson  
 Mr. and Mrs. Mathew J. Bruning  
 Mr. Leonard R. Jester  
 Ms. Peggy Johnson  
 Ms. Ruth G. Jones  
 Ms. Joyce Jackson  
 Mr and Mrs. Stephan A. Kapsch  
 Katerina Clifton and Jacqueline Holmes  
 Mr. and Mrs. Kenneth Hauser  
 Ms. Ashley Kirby  
 Mr. Paul E. Kline  
 Ms. Susan R. Knaysi  
 Ms. Linda J. Knight  
 Kroger Co.  
 Ms. Trisha K. Krupas  
 Noopur Garg and Tyler Ladner  
 Ms. Evelyn M. Lambert  
 Mr. and Mrs. Mark A. Lawson  
 Mr. Khang Le  
 Ms. Kimberly S. Lebar  
 Courtney Legum-Wenk  
 Mr. Allen Grady Lewis, III  
 Mr. and Mrs. John W. Lewis, III  
 The Linhart Foundation  
 Mr. Robert J. Lockwood  
 Ms. Linda T. Lyell  
 Dr. and Mrs. Lurton B. Lyle  
 Mr. Christopher Macturk  
 Mr. and Mrs. Ira O. Manning, II  
 Mark L. and Karen Heede  
 Mr. and Mrs. Dwayne S. Marsh  
 Dr. Frederick L. Marsh  
 Ms. Elizabeth K. Martin  
 Mr. and Mrs. Richard V. Mattingly, Jr.  
 Mr. and Mrs. Raymond McAfoose  
 Mr. Michael McCullough  
 Ms. Geraldine C. McDermott  
 Ms. Mary Franklin McDonald  
 Ms. Steffani K. McGurn  
 Jean E. McLarin  
 Mr. William H. McLarin  
 Mike and Terri Quinan  
 Mr. and Mrs. Robert M. Miller  
 Ms. Laurie H. Milligan  
 Ms. Sharon M. Minniear  
 Mrs. Charlotte M. Minor  
 Ms. Becky Mitchell  
 Mr. and Mrs. Dennis E. Moen  
 Dr. Elsie G. J. Moore  
 Mr. Harold E. Moore

## JOE KUNKEL FAMILY FUND

**Joe and Nancy Kunkel** were early champions of *The Possibilities Project* and gave generously through the Kunkel Family Foundation of The Community Foundation *Serving Richmond and Central Virginia*.

Ms. Kristen Moslow  
 Mr. and Mrs. Jeremy D. Motsinger  
 Ms. Michelle Muller  
 Mr. and Mrs. Ian A. Nimmo  
 Dr. and Mrs. Donald B. Nolan  
 The Noonan Company  
 Ms. Catharine K. O'Neil  
 Jay Oakey  
 Mr. Norman A. Parham  
 Mrs. H. Merrill Pasco  
 Paul and Laraine Warner  
 Mr. and Mrs. William H. Payne, Sr.  
 Ms. Kathryn F. Pembelton  
 Pilc & Moseley, LLC  
 Ms. Beverly T. Presser  
 Ms. Sharon Quinn  
 Mr. Gordon F. Rainey, Jr.  
 Mr. Jesse Randall  
 Mr. and Mrs. Charlie Reed  
 Mrs. John Resor  
 Rhoadesville Baptist Church  
 Mr. and Mrs. Scott Richter  
 Ms. Angela E. Roberts  
 Ms. Susan B. Robertson  
 Mr. James Clay Rollins  
 Mr. Debadash Rout  
 Mr. Josiah P. Rowe, III  
 Sadler Road LLC  
 Mr. and Mrs. J. Howard Salmons, Sr.  
 Ms. Teresa N. Sanders  
 Ms. Freda Sarpong  
 Mr. and Mrs. Henry Dale Scott  
 Ms. Heather Scott  
 Mr. William J. Seay, III  
 Ms. Debby Serena  
 Ms. Pat Severin  
 Mr. and Mrs. Richard H. Seward  
 Sheehy Ford  
 Mr. Allan Mason Smith  
 Ms. Karyn Smith



Snead Family Foundation  
 Ms. Phyllis M. Stith  
 Ms. Lindsey A. Strachan  
 Mr. and Mrs. Robert E. Stroud  
 Susan Cullen Real Estate, LLC  
 Mr. Andy Tapscott  
 Tamara and Chris West  
 Ms. Kendra C. Taylor  
 Ms. Christine N Thomas  
 Ms. Elizabeth R. Thomas  
 Mr. Gary E. Thompson  
 Mr. and Mrs. Douglas Thurston  
 Mr. Kennard J. Tillman  
 Mr. Peter G. Tindell  
 Mr. and Mrs. Peter C. Toms  
 Mr. and Mrs. Tyler R. Harris  
 Mrs. James E. Ukrop  
 United Way of Central &  
 Northeastern Connecticut  
 United Way of Greater Atlanta  
 United Way of Greater Williamsburg  
 United Way of Hopewell - Prince George  
 United Way of Rhode Island  
 United Way of Roanoke Valley  
 Mr. Howard K Unruh III  
 Ms. Allison Unruh  
 US Raceworks LLC  
 Mr. and Mrs. Stephen C. Harvey  
 Mr. Ephraim R. Walker, III  
 Mr. and Mrs. Kurt O. Wassen  
 Ms. Laura L. Weaver  
 Mr. Kenneth M. Webb  
 Mr. and Mrs. Stephen Weir  
 Wells Fargo Community Support Campaign  
 Mr. and Mrs. Richard T. Wheeler, Jr.  
 Ms. Alda L. White  
 Dr. and Mrs. James L. White  
 Mrs. Mary F. White  
 Mr. and Mrs. Norman D. Wilkerson  
 Mr. and Mrs. William Craft  
 Mrs. Betty H. Williams  
 Mr. and Mrs. Daniel L. Williams, Jr.  
 Mr. and Mrs. Fielding L. Williams, Jr.  
 Mr. and Mrs. Chris Withers  
 Ms. Dorothy C. Young

**Friend \$1 - \$99**  
 Absolute Bookkeeping Services  
 Ms. Pam Chanfrau  
 Dr. Farah Al-mtwali  
 Ms. Truitt B. Allcott  
 Mr. and Mrs. Allen E. Bowman  
 Matt Allison  
 AllState Giving Campaign  
 Amazon Smile



Mr. and Mrs. John D. Anderson  
 Ms. Marjorie S Andresen  
 Ms. Megan L. Angstadt  
 Michael Arcano  
 Mr. and Mrs. Albert K. Atkinson  
 Mr. John Badman IV  
 Ms. Anne Barker Smith  
 Ms. Susan Barnum  
 Mrs. Betty G. Bassett  
 Mr. and Mrs. J. Peter Baumgarten  
 Mr. and Mrs. R. Hunter Beane, II  
 Ms. Anna Beckley  
 Richard Belski  
 Mrs. Sue H. Betts  
 Travis Bjorklund  
 Ms. Patricia Bullock Branch  
 Ms. Susan Brett  
 Mrs. Jeanette B. Brooks  
 Bo Brown  
 Ms. Candace Brown  
 Ms. Denise Brown  
 Mr. and Mrs. Raymond I. Brown, III  
 Ms. Susan Brown  
 Sara Buckheit  
 Ms. Nancy Burzner  
 Mr. and Mrs. Thomas R. Byrd  
 CVS Caremark Annual Giving Campaign c/o  
 YourCause, LLC

Mrs. Valerie Cantrell  
 Mr. William R. Care  
 Ms. G. Diane Carey  
 Mr. and Mrs. Richard H. Carlin  
 Ms. Amanda Carlisle  
 Mr. David S. Carter, Jr.  
 Mr. Steve Carter  
 Ms. Holly Caruso  
 Ms. Yolande Challard  
 Ms. Allison Cherry  
 Christopher and Laura Webb  
 Mr. and Mrs. Mark Cipolletti  
 Mr. John H. Cobb, Jr.  
 Ms. Maribeth Christine Conrad  
 Nikki L. Cooper  
 Ms. Virginia P. Cowles  
 Mr. and Mrs. Ned Cox  
 Mrs. Sonya L. Craft  
 Ms. Teri Crocker  
 Ms. Cecelia Crouch  
 Ms. Gina Custis  
 Ms. Joan Darden  
 Emily Dause  
 Mr. and Mrs. Stephen Dause  
 Judy Douglas Dick  
 Mrs. Prudence W. Donovan  
 Mr. Cliff B Dunaway  
 Robert Eastman

Mrs. Ida V. Eaton  
 Mrs. Danise Elias  
 Ms. Jane Etoere  
 Mrs. Nancie W. Eure  
 Mr. F. Wade Evans  
 Fairview Christian Women's Fellowship  
 Ms. Sarah M. Farnham  
 Dr. and Mrs. Robert J. Fehrenbach  
 Ms. Sylvia G. Felts  
 Mr. and Mrs. Colin F. Ferguson  
 Ms. Paula J. Ferguson  
 Mr. and Mrs. Jonathan S. Ferrell  
 Ms. Lorri Finn  
 Flournoy-Threadcraft Portsmouth  
 Testamentary Trust  
 Ms. Ginger Foddrell  
 Ms. Ann D. Fortune  
 Citizens Bank Charitable Foundation  
 Mr. Patrick J. Fox  
 Mr. Thomas Francis  
 Mr. and Mrs. Tyrone A. Gaines  
 Mr. Chris Grady  
 Ms. Claire S. Gill  
 Ms. Heather Gillespie  
 Grace and Brett Smith  
 Gregory and Maria Provenzo  
 Ms. Greta Harris  
 Ms. Marny A. Hackley  
 Ms. Shirley Hall  
 Ms. Dana Hanna  
 Ms. Cheryl S. Hardman  
 Ms. Lisa Harmon  
 Ms. Hartman  
 Mr. and Mrs. Howard F. Heller  
 Mr. and Mrs. Donlie R. Henderson  
 Ms. Robin E. Hill  
 Ms. Valerie Hite  
 Mrs. Ann W. Hollar  
 Mr. Barry Horne  
 Mr. and Mrs. Donald J. Housden  
 Mr. and Mrs. John J. Hughes, Jr.  
 Mrs. Jamie M Hutchinson  
 Ms. Margaret M. Irvin  
 Ms. Stacy Israel  
 Mr. and Mrs. F. Paul Blanock  
 Mr. and Mrs. F. Edwin Jarvis  
 JCPenny  
 Ms. Lois Jennings  
 Mr. and Mrs. Alvin B. Johnson  
 Ms. Dawn Johnson  
 Ms. Deborah Johnston  
 Mr. Thomas K. Johnstone, IV  
 Ms. Susan H. Jones  
 Ms. Robyn Kaplan-Cho  
 Mr. and Mrs. James P. Kastelberg  
 Ms. Elsie Katz

Ms. Amanda Kennedy  
 Ms. Sandra King  
 Miss Laura Knott  
 Connie A. Konya  
 Ms. Cindy Kubat  
 Marcia LaMaskin  
 Reverend E. Nelson Lea  
 Ms. Sue Lee  
 Ms. Donna Lett  
 Emily Levesque  
 Ms. Sue E. G. Lewis  
 Mr. James W. Logan  
 Lois Carnochan  
 Mr. and Mrs. Harry E. Long  
 Mrs. Lucyle H. Macon  
 Ms. Ann Martin  
 Ms. Sharon Martin  
 Mr. and Mrs. Don A. Mascaro  
 Mrs. Elizabeth W. Mason  
 Elizabeth Mastropierro  
 Ms. Louise McMinn  
 Mr. Scot P. McRoberts  
 Ms. June McSwain  
 Mr. and Mrs. Lawrence G. Miller, III  
 Ms. Barbara Minor  
 Ms. Janet M. Mitchell  
 Ms. Tiffany Montgomery  
 Mr. and Mrs. Douglas E. Morrisette  
 Mr. Shaun Mortensen  
 Ms. Ginny Morton  
 Ms. Terri Mosey  
 Mr. and Mrs. Herbert Ormand, III  
 Mr. and Mrs. Jerome T. Pumo  
 Ms. Brenda S. Muntean  
 Melissa Murchie  
 Ms. Helen Turner Murphy  
 Ms. Loretta Murphy  
 Ms. Mary M. Nedell

Mr. Maurice A. Nelson  
 Mr. Randall Newton  
 Ms. F. A. Nicely  
 C. W. and Kimberly Nichols  
 Mr. and Mrs. Ernest M. Nichols  
 Mr. and Mrs. Heath Niemeyer  
 Mrs. Christina Nies  
 Ms. Mary H. Nolde  
 Ms. Lib Northen  
 Mr. and Mrs. Paul M. Nuhn  
 Ms. Kellie O'Neal  
 Mr. John M. Oakley, III  
 Mr. and Mrs. David V. O'Donnell  
 Ms. Joanna Orbeski  
 Mr. and Mrs. Albert J. Ortego  
 Ms. Elaine R. Owens  
 Mr. and Mrs. Ben Owings  
 Ms. Ellie Pappas  
 Mr. Bruce N. Parker  
 Ms. Hillary Patterson  
 Mrs. Sharon E. Peterson  
 Ms. Patricia C. Joyce Pod  
 Ms. Sonia Pysh  
 Ms. Patricia L. Quigley  
 Ms. June P. Rayfield  
 Mr. Anthony P. Renaldi  
 Mr. and Mrs. John S. Reus, Jr.  
 Courtney Rice  
 Mr. and Mrs. William A. Richardson, Jr.  
 Ms. Donna Riedel  
 Cheryl A Ritchie  
 Mr. and Mrs. Robert H. Hunt  
 Mr. and Mrs. Robert Basham, Jr.  
 Ms. Mary H. Roberts  
 Mr. and Mrs. Thomas W. Roberts  
 Ms. Rosetta V. Robinson  
 Ms. Judith D. Roop  
 Ms. Carter Rosser





## THE UNITED WAY CAMPAIGN

### Donors who have given through a **United Way Campaign:**

Kyle Anderson	Virginia R. Glowinski	Robert Dale Orfield
Emily Arft	William Harvey	Julia A. Palmer
Christy Ann Armitage	David Hester	Debra L. Reed
Emma Bailey	Laura Hunter	Sarah Conti Roach
Gary W. Baker	Christopher M. Johnson	Eileen G. Sadowski
Samona L. Barnett	Pamela S. King	Steven Sikes
Mary S. Bradley	Robert Kistner	Ann Louise Stephens
Pamela Brown	Andrea L. Koller	Makayla Tate
Jeannie Campbell	Tammy Lebrone	David Thomas
Heather Lynn Martin Cline	Noopur Garg and Tyler Ladner	Ida Tucker
Jennifer Coleman	John Thomas Lenzi	Kathryn S. Wall
Tina L. Colonna	Galinda Y. Long	Linda C. Ward
Marnie C. Crane	Dreama D. Martin	John H. Warlick
Eric Curtis	Michael McCullough	Leah Wehinger
Heather Darby	Barbara Meyer	Berkeley Wilson Whitley
Jennifer Baker Edwards	Thomblina Mills	Jeanne M. Wilkins
Vincent Ennas	Jason Musick	Karen Winzenburg
Thomas L. Foster	Cheryl M. Nunnally	

If you would like to receive news and updates about our programs please contact **Marny, 804 353-0191** or email [marny@chsva.org](mailto:marny@chsva.org). Every effort has been made to include donors who have contributed to a United Way Campaign; we apologize if your name has been omitted, please contact us.

Mrs. Gail L. Rotz	Ms. Lisa Strauss	Trina Willard
Ms. Suzanne Ruble	Mr. and Mrs. Jonathan K. Stubbs	Ms. Diane E. Williams
Ms. Kimberly Russell	Ms. Cindy Sullivan	Ms. Lynne Williams
Dr. and Mrs. William P. Sadler	Ms. Linda T. Lyell	Ms. Janet H. Wills
Ms. Penelope deBordenave Saffer	Mrs. Catherine P. Svoboda	Mr. Chris Wright
Mrs. Ann H. Sawyer	Mr. and Mrs. David G. Sweet	Mr. and Mrs. J. A. Wright
Ms. Gail Schenck	Valerie Sweet	Mr. Mark Quinton Young
Ms. Chris Schroeder	Ms. Christine L. Tanner	
Mr. Richard S. Schweiker, Jr.	Mrs. Hazel D. Thomas	<b>In Kind Gifts</b>
Ms. Ellen S. Scott	Ms. Jessica Tobin	Ms. Michelle Alford
Mr. John E. Sebastian	Travelers Employee Giving Campaign	Mrs. Laura S. Ash-Brackley
Ms. Bonnie Sechrist	Ms. Regina DePumpo	BagBoy
Ms. M. Samantha Seeley	Ms. Mary Ann Tucker	Ms. Jennifer L. Barbin
Mr. Howard C. Serkin	Ms. Jo Turek	Bay Creek Golf
Ms. Jennie Barrett Shaw	Mr. and Mrs. Blair P. Turner	Better Housing Coalition
Mr. and Mrs. Mark Shepard	United Way of the Valley & Greater Utica Area, Inc.	Birkdale Golf Course
Miss Rachel Shriver	Ms. Renee Wassum	Ms. Mary Ann Boyd
Mr. Imran Siddiqui	Mr. Kenneth D. Wathen	Brookwoods Golf Course
Mr. Paul R. Smith	Mr. Dennis K. Watson	Ms. Bambi Cooke
Ms. Ann L. Spivey	Mr. Elijah White	Ms. Anita Conner
Ms. Taylor Stamer	Berkeley and Mark Whitley	CWGA
Jan Starnes	Ms. Jean Whitlock	Mr. Stephen Dause
Ms. Pat Stauffer	Mr. and Mrs. Dean Wilkerson	Deb and Dinka Daniel
Ms. Joyce Steve	Ms. Louise Wilkinson	Dick and Marty Wilson
Mr. and Mrs. Donald C. Stratton		Dick's Sporting Goods

Ms. Susan Doepp  
 Ms. Kelli Doern  
 The Dominion Club Golf  
 Double Image Studio, LLC  
 Ms. Debra Earhart  
 Elements Massage  
 The Federal Club  
 Ms. Sarah Fernald  
 Ford's Colony Country Club  
 Ms. Kristy E. Taylor Frick  
 Glenmore Yoga and Wellness Center  
 Golf Galaxy  
 Golf Smith  
 GOLFTEC  
 Ms. Laura L. Grimes  
 Hanover Country Club  
 Mr. John Heyser  
 Mrs. Nancy C. Hicks  
 Ms. Maureen F. Hoffman  
 The Hollowells  
 Independence Golf Course  
 Indian Creek Yacht and Country Club  
 JBH Golf  
 Jefferson Lakeside Country Club  
 Ms. Kathy Johnson-Paul  
 Karsten Manufacturing  
 Kingsmill LPGA Championship  
 Ms. Ashley Kirby  
 Kregger's Tap and Table, Atlee  
 Mr. Ken Lantz  
 Lee's Hill Country Club  
 Ms. Anne Logan  
 Mr. and Mrs. O'Boyle  
 Mrs. Elizabeth K. Martin  
 Mr. and Mrs. Herbert L. McCulloch  
 Mindy Flannigan  
 Mr. and Mrs. R. A. Nelson  
 PartnerMD  
 Pendleton Golf Course  
 The Charity Giving Station  
 Mr. and Mrs. Kevin Plasse  
 Providence Golf Course  
 Randal Branding Agency  
 Redwing Lake Golf Course  
 Revive  
 Ms. Amanda Rezba  
 Rich's Stitches, Inc.  
 Richmond Flying Squirrels  
 Ms. Jeanne L. Sobol  
 Spring Creek Golf Club  
 Ms. Pat Stauffer  
 The Steward School  
 Stonehenge Country Club  
 Mrs. Angela K. Sullivan  
 Ms. Cindy Sullivan  
 Mr. Christopher Rhines and Mr. Jeff Pollard

Traditional Golf Properties  
 Torx Media  
 Mrs. James E. Ukrop  
 Ms. Sarah Vaughan  
 Ms. Julie Veleber  
 The Vineterra Golf Club  
 Ms. Kathryn S. Wall  
 Ms. Mary Allen Waller  
 Ms. Kim Warnick  
 Washington Nationals  
 Mr. and Mrs. David L. Weiss  
 Ms. Kathleen Wetzel  
 Ms. Mary F. White  
 Berkeley and Mark Whitley  
 Willow Oaks Country Club  
 Windy Hill Sports  
 Ms. Julie Wolfe  
 Ms. Emily Wright  
 Ms. Lauren Wright  
 Ms. Mary Ann Wright  
 Yellow Umbrella Provisions

### TRIBUTE GIFTS

#### Honor

#### All the CHSVA staff

Mr. and Mrs. Richard B. Bellows  
 Ms. Susan H. Brewer  
 Ms. Rosetta V. Robinson

#### Justin Anderson

Mr. and Mrs. John D. Anderson

#### Our Two Adopted Children

Mr. and Mrs. Dwight G. Barkley

#### Laura S. Ash-Brackley

Mr. Richard Brackley

#### Elizabeth Carey Bellows

Mr. and Mrs. Richard B. Bellows

#### Anne Murphy Douglas Brumley

Ms. Helen Turner Murphy

#### Lyons Burke

Mr. and Mrs. Steve A. Markel

#### Molly Min Cametas

Mr. and Mrs. J. Stefan Cametas

#### Kaitlyn & David Carter

Ms. Nadine Marsh-Carter

#### Katherine J. Cress

Mr. Anthony P. Renaldi

#### Jeanne Dunaway

Mr. Cliff B. Dunaway

#### Charlie R. Eaton

Mrs. Ida V. Eaton

#### Daniel Ehrich

Mr. and Mrs. Roger W. Ehrich

#### Eli James Esposito

The Esposito Family

#### Allyson Evenson

Ms. Truitt B. Allcott

#### Kay Harris

Ms. Mary Harris Roberts

#### Marshall Carter Harris

Ms. Mary H. Roberts

#### Hugh and Barbara Hollar

Ms. Ann W. Hollar

#### Emy Kapsch

Mr. and Mrs. Stephan A. Kapsch

#### In Honor of Our Daughter

Mr. Paul Kline

#### Nikisha Kozik

Miss Rachel Shriver

#### The Labott Family

Ms. Ann D. Fortune

Ms. Heather Scott





**Faith Labott**

Mr. and Mrs. Scott Labott  
Ms. Mary H. Nolde

**Eddie Lumpkin**

The Hon. and Mrs. James M. Lumpkin

**Nadine D. Marsh-Carter**

Ms. Sally T. Bagley  
Mr. and Mrs. Mark Cipolletti  
Ms. Judith B. Collins  
St. Christopher's School  
Dr. Frederick L. Marsh

**Harold E. Moore**

Dr. Elsie G. J. Moore

**Joseph Morrissette**

Mr. and Mrs. Douglas E. Morrissette

**Bill Moslow**

Ms. Kristen Moslow

**Mary Omberg**

Ms. Elizabeth K. Martin

**Emma Pankey**

Mr. Leonard R. Jester

**Peter M. Pufki**

Ms. Sharon E. Peterson

**Our sons Glen R. and Neil K. Sawyer**

Ms. Ann H. Sawyer

**Margaret and Martin Schott**

Mr. and Mrs. Ian A. Nimmo

**Robert E. Shoun**

Ms. Micki L. Stout  
Ms. Mary F. White

**Krista Skelton**

Ms. Marynn Dause

**Janeva Smith**

Stephen J. and Maura Dean Bittner

**Nia Smith**

Valerie J. Farmer

**Paul Smith**

Mr. Allan Mason Smith

**The Social Workers of CHS**

Ms. Jennifer L. Barbin

**Micki L. Stout**

Mr. and Mrs. Daniel L. Williams, Jr.

**Summerfield/Sebastian Family**

Ms. Kimberly Russell

**Joseph Hamilton Thomas**

Mrs. Hazel D. Thomas

**Kemper Thornton**

Mrs. Elizabeth K. Martin

**Three Wonderful Vasquez Children and Their Families**

Mr. and Mrs. Robert Frank Vasquez

**Katrina Tillman**

Mr. Kennard J. Tillman

**Melvin E. Tull**

Mr. Michael McCullough  
Matthew Cheek

**Jeffrey T. Weaver**

Ms. Laura L. Weaver

**Emily Wright**

Marcia LaMaskin

**Lynn Smith Wright**

Dr. Melville G. Wright, III

**Memorial****Atkinson and Thurman Families**

Mr. and Mrs. Albert K. Atkinson

**Beverley Buran**

Miss Laura Knott

**Alice E. Care**

Mr. William R. Care

**Martha Foster Carter and Julie Ann Fuss**

Anonymous

**Patsy Mitchell Cashion**

Randall and Linda Smith

**Ann Bowers Catterton**

Buddy and Fraser Finney

**Earle M. Copp**

Ms. Kellie O'Neal

**Dr. Aubrey and Mrs. Pauline Cook Duffer**

Ms. Judith D. Roop

**Lou Noell Driskill**

Mr. William A. Driskill

**Hugh William Foster**

Ms. Gail L. Rotz

**John Knox McEwen Frank**

Ms. Susan S. Schmidt

**Nellie Butler Gill**

Ms. Sylvia G. Felts

**Lessie Mae Hamilton**

Mr. and Mrs. Jonathan K. Stubbs

**Ollie Beavin Issac**

Mrs. Melissa W Brannan  
Mr. and Mrs. Raymond I. Brown, III  
Mr. and Mrs. Thomas R. Byrd  
Mrs. Danise Elias  
Ms. Ruth Franklin  
Ms. Claire S. Gill  
Ms. Susan H. Jones  
Ms. Sue E. G. Lewis  
Mr. and Mrs. Don A. Mascaro  
Mr. and Mrs. Lawrence G. Miller, III  
C. W. and Kimberly Nichols  
Mr. and Mrs. Ernest M. Nichols  
Ms. Ellen S. Scott  
Mr. and Mrs. Richard H. Seward  
Mr. Thomas G. Snead, Jr.  
Mr. Kenneth D. Wathen  
Mr. and Mrs. Richard T. Wheeler, Jr.

**Mary Grace Jester**

Mr. Leonard Jester

**Clayton Ernest Grant Jones**

Ms. Mary Ann Tucker

**Betsy M. McLarin**

Ms. June P. Rayfield

**James Milburn Monroe**

Mr. Elijah White

**My Parents**

Ms. Mary Franklin McDonald

**Mrs. Leland M. Nye**

Mr. James M. Stacia

**H. Merrill Pasco**

Mrs. H. Merrill Pasco

**David Frankman Peters**

Ms. Catherine P. Svoboda

**Mary Frances Quinn**

Matt Allison  
Ms. Marjorie S Andresen  
Michael Arcano  
Army Human Dimension Community of Practice  
Connecticut Education Association  
Nikki L. Cooper  
Mr. and Mrs. Steven Heidecker  
Ms. Robyn Kaplan-Cho  
Connie A. Konya  
Ms. Louise McMinn  
Mr. Randall Newton  
Ms. Sharon Quinn  
Cheryl A Ritchie  
Mr. Chris Wright  
Mr. Mark Quinton Young

**Sheila Campbell Raney**

Mrs. Beverly H. Baker  
Mr. and Mrs. Robert Basham, Jr.  
Ms. Jean Bryan  
Ms. Margaret M. Bryan  
Mrs. Amy Caruso Gay  
Mr. Barry Horne  
Ms. Peggy Johnson  
Mr. and Mrs. Kenneth Hauser  
Mrs. Nadine Marsh-Carter  
Mr. and Mrs. Herbert Ormand, III  
Mr. and Mrs. Charlie Reed  
Carrie Rule  
Mr. and Mrs. David S. Smith  
Ms. Karyn Smith  
Ms. Allison Unruh  
Mr. Howard K Unruh III  
Mr. and Mrs. Dean Wilkerson

**Blanche Sadler and Daughter Mildred**

Mrs. Elaine R. Owens

**Robert Dewey Sadler, Jr.**

Mr. and Mrs. F. Paul Blanock  
Mr. and Mrs. William Craft  
Mr. and Mrs. Robert H. Hunt  
Mr. Bruce N. Parker  
Mr. and Mrs. Jerome T. Pumo

**Ramsay R. Smith**

Mr. Paul R. Smith

**Lloyd Raymond Sorenson, Jr.**

Kathy Allen  
Claire and Bill Dick  
Judy Douglas Dick  
Mrs. Nancie W. Eure  
Grace and Brett Smith  
Heather Tomlinson/Jayne Varao  
Fred and Liz Johnson  
Lois O. Carnochan  
Mrs. Lucyle H. Macon  
Mrs. Loretta Murphy  
Mr. Howard C. Serkin  
Mr. and Mrs. Walter Reiser

**Charles Thomas Spivey**

Mrs. Ann L. Spivey

**Mary Taliaferro**

Ms. Nancy R. Little

**Elizabeth Whiteley**

Ms. Elizabeth W. Mason





YOUR GIFT MAKES OUR PROGRAMS POSSIBLE.  
THANKS FOR YOUR SUPPORT!

DONATE NOW



4200 Fitzhugh Avenue, Richmond, VA 23230 | Phone: 804.353.0191 | Toll-free: 800.247.2888 | Fax: 804.353.7451 | [chsva.org](http://chsva.org)

